



SOUTHMERE HOUSE E15  
**1 bedroom apartment**

**£375,000**  
SOLD STC\*\*

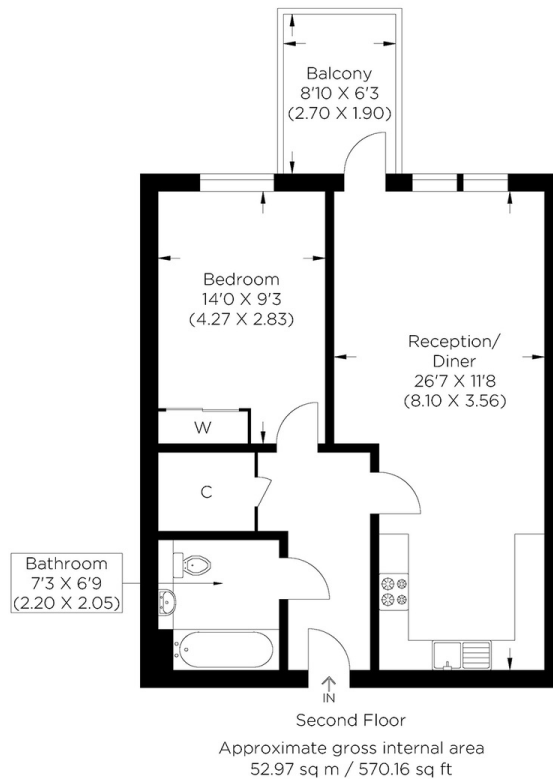




# SOUTHMERE HOUSE E15

This beautiful one-bedroom apartment in Southmere House on Highland Street forms part of Bellway Homes' Legacy Wharf, Stratford E15 development. Very sought after due to the excellent facilities, including a roof terrace with views of the London skyline, a gym and concierge services. Moreover, the development has fantastic links to Stratford, Pudding Mill Lane and Bromley-by-Bow stations. Just 15 minutes from Canary Wharf and a short walk to Olympic Park, this home is ideal for those looking for convenience and having all amenities and leisure right on their doorstep. The accommodation is in excellent condition with an open plan kitchen/living area, double bedroom, family bathroom and a gorgeous balcony to enjoy your morning coffee. Completed to a high standard and spec, the new owners can move straight in without lifting a finger!

Borough: Newham\* Council Tax: C\* EPC: B Lease Term: 996 years\* Service Charge: £1,889\* Ground Rent: £300\*  
Nearest Station: Pudding Mill Lane (0.16 miles) Material Information: [www.alexneil.com/material-information](http://www.alexneil.com/material-information)



**Canary Wharf & Docklands Office**  
**2 Westferry Road, Canary Wharf, London E14 8JT**

**t: 020 7537 9859 e: [canarywharf@alexneil.com](mailto:canarywharf@alexneil.com)**

Disclaimer: Property descriptions are subjective and used in good faith as an opinion rather than statements of fact. The owner provided information relating to title, tenure, service charges and ground rent information. Therefore, please make specific enquiries to ensure that our descriptions match your expectations of the property. Floor plan measurements are approximate and for illustrative purposes only. Furthermore, we have not tested any services, systems or appliances at this property. And we strongly recommend that you verify all the provided information on inspection and that your surveyor and conveyancer further confirm details. Also, market conditions and property values regularly fluctuate. And showcased sold properties demonstrate our previous successes rather than indicate live property values. \*As advised by the owner. \*\*Property sold subject to contract.

# ALEX NEIL

ESTATE AGENTS SINCE 1984

2024 signifies our **40th Anniversary**, and we are immensely proud to have reached this impressive longevity milestone. In celebration, we launched an **exceptional promotion** for sellers, affording them increased marketing exposure for free!

**40 years of expertise:** With four decades of experience, we bring a wealth of knowledge and expertise. Our durability is a testament to the trust satisfied clients place in us. We understand the nuances of the diverse neighbourhoods we cover. Our local expertise allows us to provide tailored solutions, whether you're buying or selling, allowing you to move with confidence.



ALEX NEIL

ESTATE AGENTS SINCE 1984

[www.alexneil.com](http://www.alexneil.com)