



LORD PALMERSTON APARTMENTS E3
1 bedroom apartment

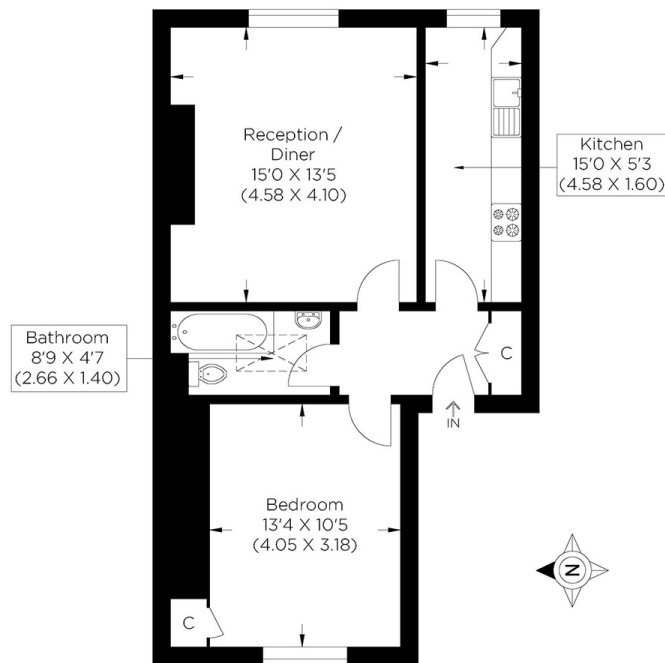
£400,000
SOLD



LORD PALMERSTON APARTMENTS E3

A wonderful top floor apartment full of character in the sought after location of Lord Palmerston Apartments, Hewlett Road, E3. Share of freehold and has a new 999 year lease, this conversion of just six apartments offers a perfect combination of charm and peacefulness. In excellent condition you can move straight in and enjoy the wonderful views immediately. The accommodation itself is on the top floor and consists of generous proportions through-out. A large living room with a separate kitchen, ideal for those looking for versatile space for potential staying guests. You also have the double bedroom, modern bathroom and a wealth of storage space around the whole apartment. Furthermore you have the communal gardens, maintained to a high standard showing the fantastic community spirit within the building. Located in Hewlett Road, just off Roman Road, you have a wide selection of amenities right on your doorstep including Victoria Park and multiple tube stations both easily accessible.

Borough: Tower Hamlets* Council Tax: C* EPC: C Lease Term: 999* Service Charge: £640* Ground Rent: £10*



Second Floor

Approximate gross internal area
51.95 sq m / 559.18 sq ft



Canary Wharf & Docklands Office
2 Westferry Road, Canary Wharf, London E14 8JT

t: 020 7537 9859 e: canarywharf@alexneil.com

Disclaimer: Property descriptions are subjective and used in good faith as an opinion rather than statements of fact. The owner provided information relating to title, tenure, service charges and ground rent information. Therefore, please make specific enquiries to ensure that our descriptions match your expectations of the property. Floor plan measurements are approximate and for illustrative purposes only. Furthermore, we have not tested any services, systems or appliances at this property. And we strongly recommend that you verify all the provided information on inspection and that your surveyor and conveyancer further confirm details. Also, market conditions and property values regularly fluctuate. And showcased sold properties demonstrate our previous successes rather than indicate live property values. *As advised by the owner. **Property sold subject to contract.

ALEX NEIL

ESTATE AGENTS SINCE 1984