



BANBURY POINT E14  
**2 bedroom apartment**

**£550,000**  
SOLD

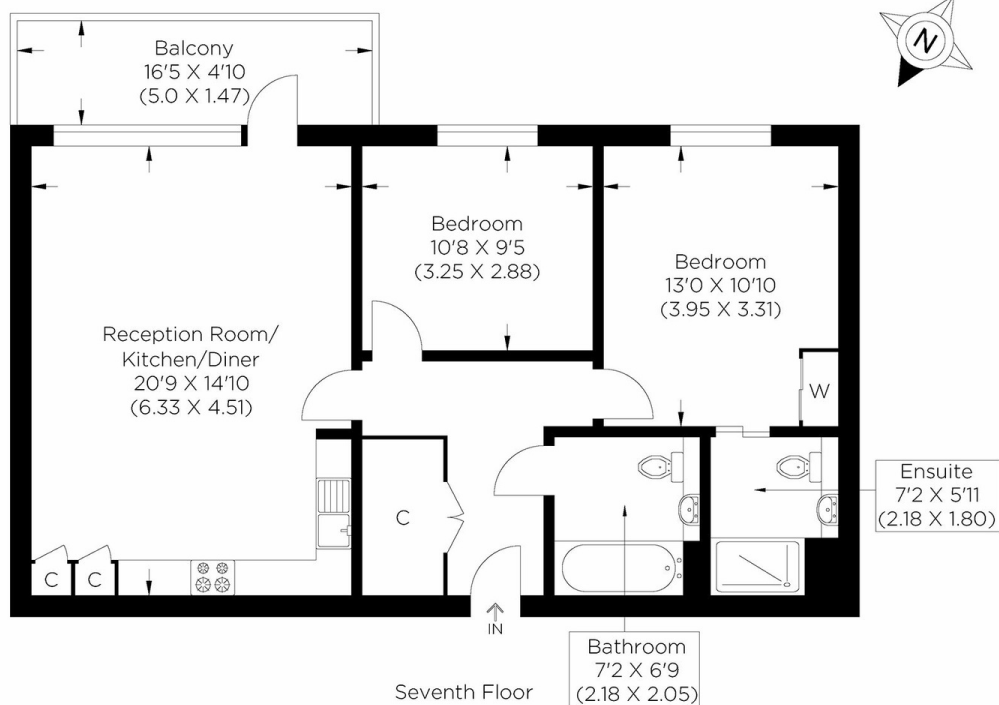




# BANBURY POINT E14

Set in the sought after Banbury Point development on Cording Street, Poplar E14, is this two bedroom apartment offering great living space and a wonderful private balcony. The open plan kitchen-reception room is bright and spacious leading on to the private balcony which has stunning views towards Canary Wharf and beyond. Fitted kitchen includes the integrated appliances, two large bedrooms and a modern en-suite bathroom to the master. The property also offers a modern guest bathroom and a welcoming hallway. The development has a residents gym on site, concierge service, communal roof terrace and is EWS1 compliant. Banbury Point is located within a few moments of Langdon Park DLR station allowing access to Canary Wharf and all its amenities. Devons Road and All Saints are also close by providing transport links into the City. All times and distances are approximate.

Borough: Tower Hamlets\* Council Tax: D\* EPC: B Lease Term: 245 years\* Service Charge: £2,200\* Ground Rent: £300\*  
Nearest Station: Langdon Park (0.08 miles) Material Information: [www.alexneil.com/material-information](http://www.alexneil.com/material-information)



Approximate gross internal area  
71.97 sq m / 774.67 sq ft



**Canary Wharf & Docklands Office**  
**2 Westferry Road, Canary Wharf, London E14 8JT**

t: 020 7537 9859 e: [canarywharf@alexneil.com](mailto:canarywharf@alexneil.com)

Disclaimer: Property descriptions are subjective and used in good faith as an opinion rather than statements of fact. The owner provided information relating to title, tenure, service charges and ground rent information. Therefore, please make specific enquiries to ensure that our descriptions match your expectations of the property. Floor plan measurements are approximate and for illustrative purposes only. Furthermore, we have not tested any services, systems or appliances at this property. And we strongly recommend that you verify all the provided information on inspection and that your surveyor and conveyancer further confirm details. Also, market conditions and property values regularly fluctuate. And showcased sold properties demonstrate our previous successes rather than indicate live property values. \*As advised by the owner. \*\*Property sold subject to contract.

## ALEX NEIL

ESTATE AGENTS SINCE 1984

2024 signifies our **40th Anniversary**, and we are immensely proud to have reached this impressive longevity milestone. In celebration, we launched an **exceptional promotion** for sellers, affording them increased marketing exposure for free!

**40 years of expertise:** With four decades of experience, we bring a wealth of knowledge and expertise. Our durability is a testament to the trust satisfied clients place in us. We understand the nuances of the diverse neighbourhoods we cover. Our local expertise allows us to provide tailored solutions, whether you're buying or selling, allowing you to move with confidence.



ALEX NEIL

ESTATE AGENTS SINCE 1984

[www.alexneil.com](http://www.alexneil.com)