



INDESCON SQUARE E14  
**studio apartment**

**£300,000**  
SOLD

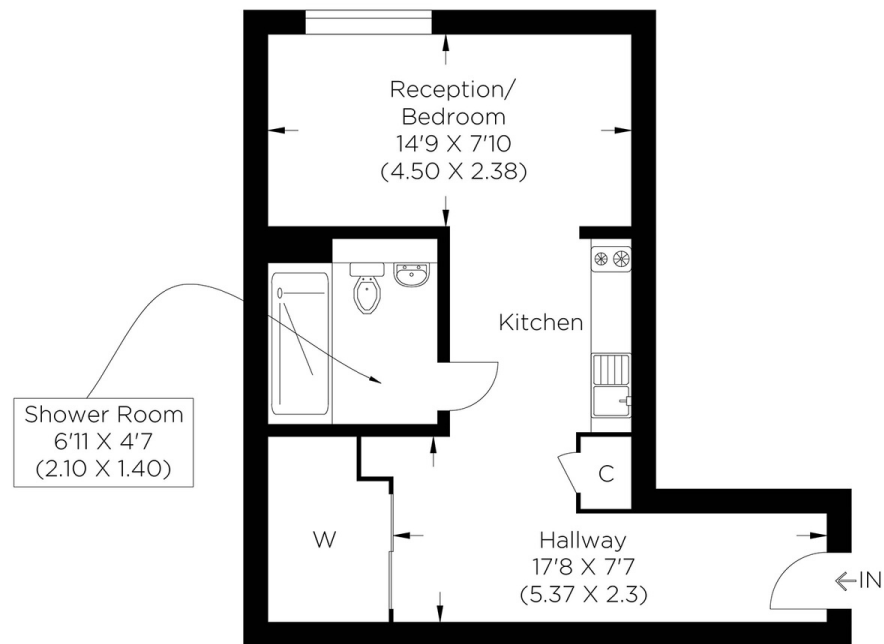




# INDESCON SQUARE E14

Forming part of the desirable Talisman Tower, Indecon Square, Canary Wharf E14, this apartment is on the fifth floor. The carefully designed and configured interior is ideal for entertaining and comfortable living, with a bright and airy open-plan kitchen/living space with stunning floor-to-ceiling windows looking towards Canary Wharf. Ideally positioned for the financial district, this property would suit professionals and affords the convenience of the plethora of trendy bars and restaurants that Canary Wharf encompasses. South Quay DLR also provides excellent connections to travel further afield. The lovely green space of Sir John McDougall Gardens, which is close to the waterfront path, provides the perfect setting for some exercise or a leisurely stroll at the weekend with tranquil surroundings. Talisman Tower has attentive concierge services. This superb apartment will attract much interest, so your earliest inspection is recommended.

Borough: Tower Hamlets\* Council Tax: D\* EPC: TBA Lease Term: 987 years\* Service Charge: £2,400\* Ground Rent: £300\*  
Nearest Station: South Quay (0.21 miles) Material Information: [www.alexneil.com/material-information](http://www.alexneil.com/material-information)



Fifth Floor  
Approximate gross internal area  
36.03 sq m / 387.82 sq ft



**Canary Wharf & Docklands Office**  
**2 Westferry Road, Canary Wharf, London E14 8JT**

**t: 020 7537 9859 e: [canarywharf@alexneil.com](mailto:canarywharf@alexneil.com)**

Disclaimer: Property descriptions are subjective and used in good faith as an opinion rather than statements of fact. The owner provided information relating to title, tenure, service charges and ground rent information. Therefore, please make specific enquiries to ensure that our descriptions match your expectations of the property. Floor plan measurements are approximate and for illustrative purposes only. Furthermore, we have not tested any services, systems or appliances at this property. And we strongly recommend that you verify all the provided information on inspection and that your surveyor and conveyancer further confirm details. Also, market conditions and property values regularly fluctuate. And showcased sold properties demonstrate our previous successes rather than indicate live property values. \*As advised by the owner. \*\*Property sold subject to contract.

## ALEX NEIL

ESTATE AGENTS SINCE 1984

2024 signifies our **40th Anniversary**, and we are immensely proud to have reached this impressive longevity milestone. In celebration, we launched an **exceptional promotion** for sellers, affording them increased marketing exposure for free!

**40 years of expertise:** With four decades of experience, we bring a wealth of knowledge and expertise. Our durability is a testament to the trust satisfied clients place in us. We understand the nuances of the diverse neighbourhoods we cover. Our local expertise allows us to provide tailored solutions, whether you're buying or selling, allowing you to move with confidence.



ALEX NEIL

ESTATE AGENTS SINCE 1984

[www.alexneil.com](http://www.alexneil.com)