



SOUTHMERE HOUSE E15
1 bedroom apartment

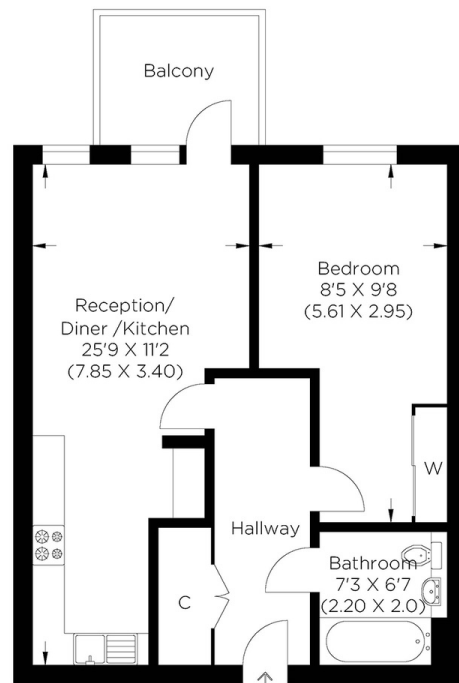
£400,000
SOLD



SOUTHMERE HOUSE E15

This one-bedroom apartment in Southmere House, Highland Street, Stratford E15, is thoughtfully designed and finished to an impeccable standard, forming part of Bellway's Legacy Wharf development. The generous accommodation spans over 550 sq ft. It boasts a stunning open-plan kitchen with integrated appliances opening to the vast living area, a high-spec finish, a double bedroom and a stylish bathroom. Furthermore, the sizable balcony provides a lovely space to unwind after a long day. The resident's facilities are also plentiful, including a concierge service, a gymnasium, communal gardens, and a roof terrace. Southmere House is well placed for Pudding Mill DLR Station and Stratford Underground Station whilst also within easy reach of well-connected bus stops. Stratford is an increasingly sought-after residential area of East London, with Hackney Wick, Victoria Park and Bow easily accessible.

Borough: Newham* Council Tax: C* EPC: B Lease Term: 996 years* Service Charge: £1,850* Ground Rent: £300*
Nearest Station: Pudding Mill Lane (0.16 miles) Material Information: www.alexneil.com/material-information



Third Floor
Approximate gross internal area
51.02 sq m / 549.17 sq ft



Canary Wharf & Docklands Office
2 Westferry Road, Canary Wharf, London E14 8JT

t: 020 7537 9859 e: canarywharf@alexneil.com

Disclaimer: Property descriptions are subjective and used in good faith as an opinion rather than statements of fact. The owner provided information relating to title, tenure, service charges and ground rent information. Therefore, please make specific enquiries to ensure that our descriptions match your expectations of the property. Floor plan measurements are approximate and for illustrative purposes only. Furthermore, we have not tested any services, systems or appliances at this property. And we strongly recommend that you verify all the provided information on inspection and that your surveyor and conveyancer further confirm details. Also, market conditions and property values regularly fluctuate. And showcased sold properties demonstrate our previous successes rather than indicate live property values. *As advised by the owner. **Property sold subject to contract.

ALEX NEIL

ESTATE AGENTS SINCE 1984

2024 signifies our **40th Anniversary**, and we are immensely proud to have reached this impressive longevity milestone. In celebration, we launched an **exceptional promotion** for sellers, affording them increased marketing exposure for free!

40 years of expertise: With four decades of experience, we bring a wealth of knowledge and expertise. Our durability is a testament to the trust satisfied clients place in us. We understand the nuances of the diverse neighbourhoods we cover. Our local expertise allows us to provide tailored solutions, whether you're buying or selling, allowing you to move with confidence.



ALEX NEIL

ESTATE AGENTS SINCE 1984

www.alexneil.com