



PLATE HOUSE E14
1 bedroom apartment

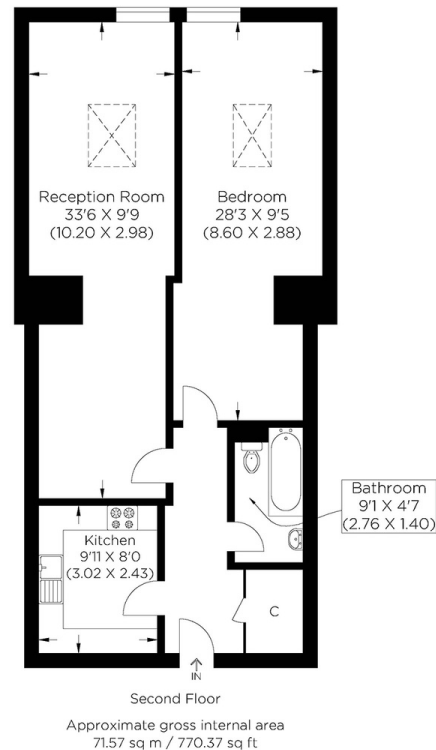
£325,000
SOLD



PLATE HOUSE E14

This well-presented loft-style one-bedroom apartment is in Grade II Listed converted 19th Century warehouse, the Plate House, Burrells Wharf Square, Isle of Dogs E14. The apartment features high ceilings, skylights, a large living room, a separate kitchen, a modern fitted bathroom, and a comfortable-sized bedroom. The property has large windows giving a light and airy feel with sunny afternoons and beautiful sunsets. The property represents a perfect opportunity for anyone looking for a new home, a first-time buyer, someone hoping to downsize, or a pied-à-Terre. Burrells Wharf centres around a communal courtyard close to the River Thames. On-site facilities are excellent: well-staffed site office with portage, a residents' gym, sauna & swimming pool. Burrells Wharf is near Mudchute DLR station and within walking distance of Mast House Terrace pier for Thames Clipper service for easy access to Canary Wharf, The O2 Centre & central London.

Borough: Tower Hamlets* Council Tax: E* EPC: E Lease Term: 91 years* Service Charge: £5,600* Ground Rent: £50*
Nearest Station: Mudchute (0.29 miles) Material Information: www.alexneil.com/material-information



Canary Wharf & Docklands Office
2 Westferry Road, Canary Wharf, London E14 8JT

t: 020 7537 9859 e: canarywharf@alexneil.com

Disclaimer: Property descriptions are subjective and used in good faith as an opinion rather than statements of fact. The owner provided information relating to title, tenure, service charges and ground rent information. Therefore, please make specific enquiries to ensure that our descriptions match your expectations of the property. Floor plan measurements are approximate and for illustrative purposes only. Furthermore, we have not tested any services, systems or appliances at this property. And we strongly recommend that you verify all the provided information on inspection and that your surveyor and conveyancer further confirm details. Also, market conditions and property values regularly fluctuate. And showcased sold properties demonstrate our previous successes rather than indicate live property values. *As advised by the owner. **Property sold subject to contract.

ALEX NEIL

ESTATE AGENTS SINCE 1984

2024 signifies our **40th Anniversary**, and we are immensely proud to have reached this impressive longevity milestone. In celebration, we launched an **exceptional promotion** for sellers, affording them increased marketing exposure for free!

40 years of expertise: With four decades of experience, we bring a wealth of knowledge and expertise. Our durability is a testament to the trust satisfied clients place in us. We understand the nuances of the diverse neighbourhoods we cover. Our local expertise allows us to provide tailored solutions, whether you're buying or selling, allowing you to move with confidence.



ALEX NEIL

ESTATE AGENTS SINCE 1984

www.alexneil.com