



KIRKLAND HOUSE E14
2 bedroom apartment

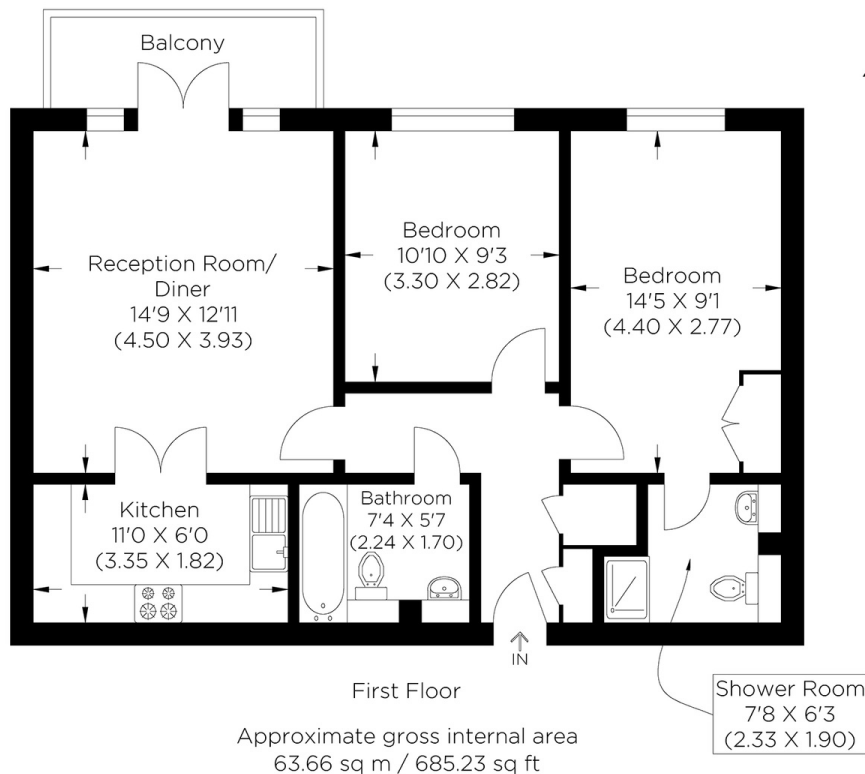
£500,000
SOLD



KIRKLAND HOUSE E14

We present this immaculate two-bedroom first-floor apartment in Kirkland House, St. David's Square, E14, a popular riverside development. This beautifully presented apartment comprises a spacious lounge with access to a private balcony, which offers southeast views towards the River Thames. Additionally, there is a fitted kitchen with a range of integrated appliances. Furthermore, there are two double bedrooms and two bathrooms, and one is en-suite to the main bedroom. Lockes Wharf St. Davids Square is perfectly positioned for Mudchute DLR Station, an array of frequent bus services and the Greenwich Foot Tunnel, all providing excellent links. With the vibrancy of Canary Wharf and notable Greenwich within easy reach, the development boasts a swimming pool, gymnasium, 24-hour concierge, and secure parking. Your earliest viewing is highly recommended.

Borough: Tower Hamlets* Council Tax: D* EPC: B Lease Term: 975 years* Service Charge: £3,600* Ground Rent: £175*
Nearest Station: Island Gardens (0.28 miles) Material Information: www.alexneil.com/material-information



Canary Wharf & Docklands Office
2 Westferry Road, Canary Wharf, London E14 8JT

t: 020 7537 9859 e: canarywharf@alexneil.com

Disclaimer: Property descriptions are subjective and used in good faith as an opinion rather than statements of fact. The owner provided information relating to title, tenure, service charges and ground rent information. Therefore, please make specific enquiries to ensure that our descriptions match your expectations of the property. Floor plan measurements are approximate and for illustrative purposes only. Furthermore, we have not tested any services, systems or appliances at this property. And we strongly recommend that you verify all the provided information on inspection and that your surveyor and conveyancer further confirm details. Also, market conditions and property values regularly fluctuate. And showcased sold properties demonstrate our previous successes rather than indicate live property values. *As advised by the owner. **Property sold subject to contract.

ALEX NEIL

ESTATE AGENTS SINCE 1984