



SHOOTERS HILL ROAD SE3
2 bedroom apartment

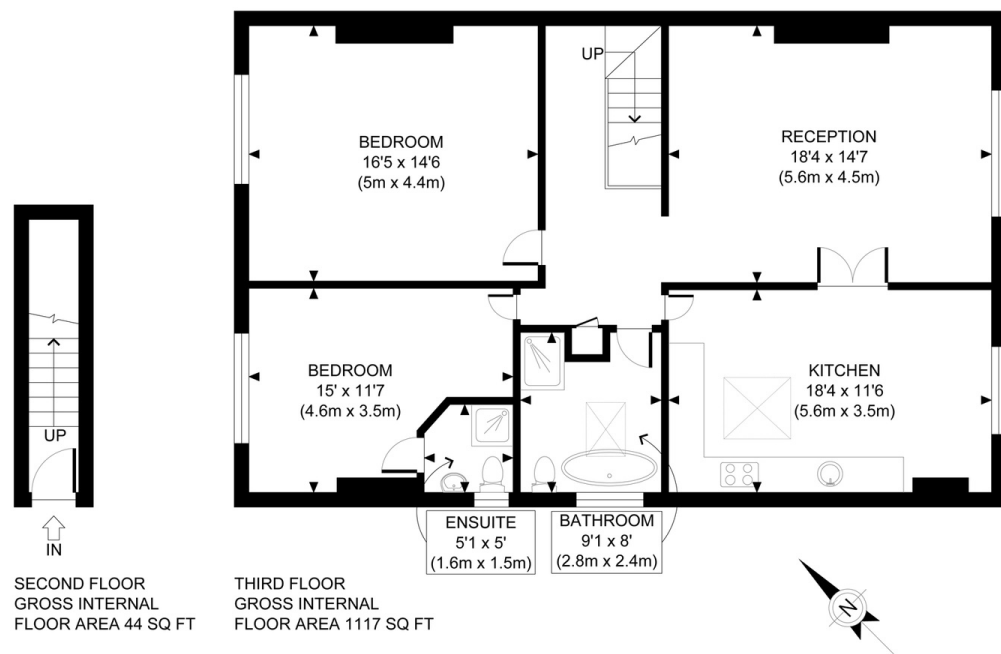
£615,000
SOLD



SHOOTERS HILL ROAD SE3

Set on the top floor of this semi-detached Victorian residence perfectly placed on convenient Shooters Hill Road, Blackheath SE3. This property represents a generous and versatile accommodation measuring approximately 1150 sqft. Access is via a landscaped and gravelled driveway which includes off-street parking. The accommodation comprises a large reception room with double doors onto a modern fitted kitchen-diner, two double bedrooms, one with a marble tiled en-suite and a modern family bathroom. The reception room boasts a period-style fireplace in working order and many period features, such as cornices and high skirting boards. This unique flat also enjoys the use of a landscaped communal garden. This section of Shooters Hill Road is ideal for commutes from Blackheath Standard Station. The various local amenities include independent shops, cafes, and easy access to the Jubilee Line at North Greenwich or Blackheath Village and the mainline station.

Borough: Royal Greenwich* Council Tax: C* EPC: D Lease Term: 91 years* Service Charge: TBA Ground Rent: TBA
 Nearest Station: Westcombe Park (0.67 miles) Material Information: www.alexneil.com/material-information



APPROX. GROSS INTERNAL FLOOR AREA 1161 SQ FT / 108 SQM

Rotherhithe & Bermondsey Office
 146 Lower Road, London SE16 2UG

t: 020 7237 6767 e: rotherhithe@alexneil.com

Disclaimer: Property descriptions are subjective and used in good faith as an opinion rather than statements of fact. The owner provided information relating to title, tenure, service charges and ground rent information. Therefore, please make specific enquiries to ensure that our descriptions match your expectations of the property. Floor plan measurements are approximate and for illustrative purposes only. Furthermore, we have not tested any services, systems or appliances at this property. And we strongly recommend that you verify all the provided information on inspection and that your surveyor and conveyancer further confirm details. Also, market conditions and property values regularly fluctuate. And showcased sold properties demonstrate our previous successes rather than indicate live property values. *As advised by the owner. **Property sold subject to contract.



ALEX NEIL

ESTATE AGENTS SINCE 1984

2024 signifies our **40th Anniversary**, and we are immensely proud to have reached this impressive longevity milestone. In celebration, we launched an **exceptional promotion** for sellers, affording them increased marketing exposure for free!

40 years of expertise: With four decades of experience, we bring a wealth of knowledge and expertise. Our durability is a testament to the trust satisfied clients place in us. We understand the nuances of the diverse neighbourhoods we cover. Our local expertise allows us to provide tailored solutions, whether you're buying or selling, allowing you to move with confidence.



ALEX NEIL

ESTATE AGENTS SINCE 1984

www.alexneil.com