



CARMINE WHARF E14
1 bedroom apartment

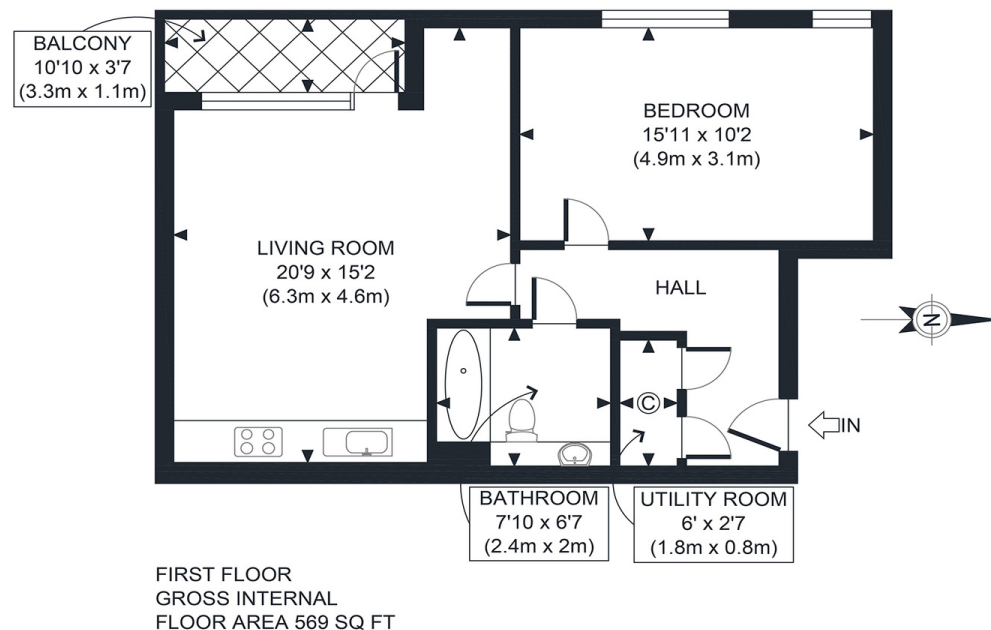
£325,000
SOLD



CARMINE WHARF E14

This well-proportioned one-bedroom apartment is in the exclusive gated development Carmine Wharf, Copenhagen Place, Poplar, E14. The property is close to Westferry and Limehouse DLR Stations and benefits from a private balcony, secure entry, and lift access. The property comprises a spacious reception room/kitchen with a glazed door to the balcony, a double bedroom and a chic bathroom. Transport links near the property include Westferry Station (DLR services) and Limehouse Station (National Rail and DLR services). For the motorist, the property's location provides quick and easy access to the A12, A13, the Blackwall and Limehouse Link Tunnels for travel to and from the 2012 Olympic Park, Canary Wharf, the City, Central London and beyond.

Borough: Tower Hamlets* Council Tax: C* EPC: C Lease Term: 111* Service Charge: £2,000* Ground Rent: £250*



APPROX. GROSS INTERNAL FLOOR AREA 569 SQ FT / 53 SQM

Canary Wharf & Docklands Office
2 Westferry Road, Canary Wharf, London E14 8JT

t: 020 7537 9859 e: canarywharf@alexneil.com

Disclaimer: Property descriptions are subjective and used in good faith as an opinion rather than statements of fact. The owner provided information relating to title, tenure, service charges and ground rent information. Therefore, please make specific enquiries to ensure that our descriptions match your expectations of the property. Floor plan measurements are approximate and for illustrative purposes only. Furthermore, we have not tested any services, systems or appliances at this property. And we strongly recommend that you verify all the provided information on inspection and that your surveyor and conveyancer further confirm details. Also, market conditions and property values regularly fluctuate. And showcased sold properties demonstrate our previous successes rather than indicate live property values. *As advised by the owner. **Property sold subject to contract.



ALEX NEIL

ESTATE AGENTS SINCE 1984