



ST. DAVIDS SQUARE E14
5 bedroom town house

£800,000
SOLD

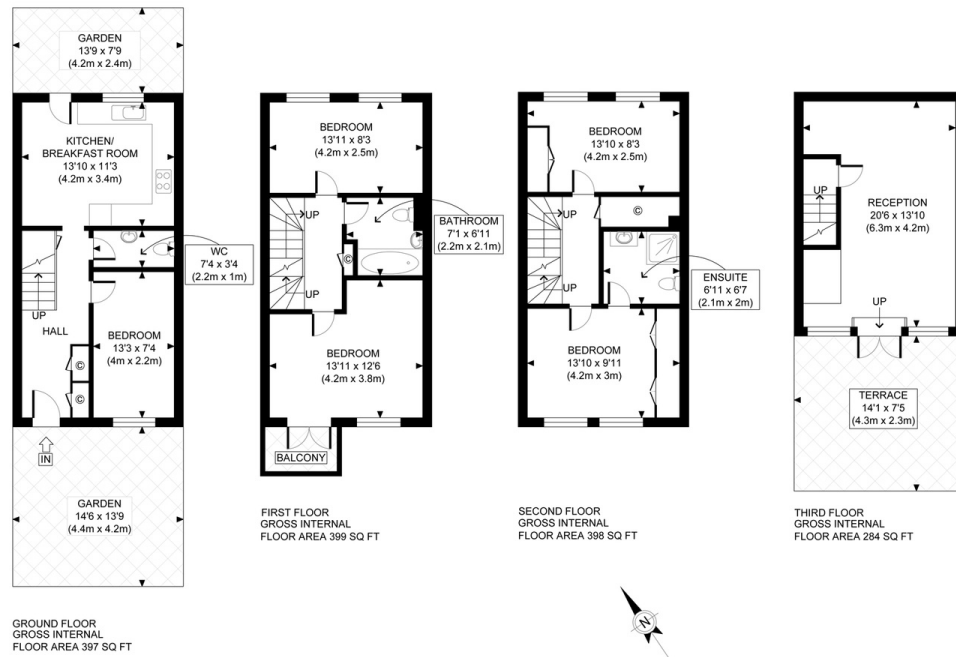


ST. DAVIDS SQUARE E14

We are pleased to present to the market this 5 Bedroom Terraced House situated in a private development Lockes Wharf St. Davids Square, Isle of Dogs, E14 with private leisure facilities and a concierge. Ideally placed for Canary Wharf and the Foot Tunnel to Greenwich, which is just a short walk away the property also benefits from private secure parking. The ground floor boasts a spacious entrance hall, open plan kitchen/breakfast room, Terrace, WC and bedroom which can be used for a study. Leading up to the first floor which comprises the living room, family bathroom and a spacious bedroom with an en-suite and balcony. The second floor features a large bedroom with an en-suite and an additional bedroom. This property is located within walking distance from Island Gardens and Mudchute DLR Stations, both with good links. Close to a selection of shops and amenities. Millwall Park and Mudchute Park and Farm are a short walk away from the property.

Borough: Tower Hamlets* Council Tax: F* EPC: C

Nearest Station: Island Gardens (0.23 miles) Material Information: www.alexneil.com/material-information



APPROX. GROSS INTERNAL FLOOR AREA 1478 SQ FT / 137 SQM

Canary Wharf & Docklands Office
2 Westferry Road, Canary Wharf, London E14 8JT

t: 020 7537 9859 e: canarywharf@alexneil.com

Disclaimer: Property descriptions are subjective and used in good faith as an opinion rather than statements of fact. The owner provided information relating to title, tenure, service charges and ground rent information. Therefore, please make specific enquiries to ensure that our descriptions match your expectations of the property. Floor plan measurements are approximate and for illustrative purposes only. Furthermore, we have not tested any services, systems or appliances at this property. And we strongly recommend that you verify all the provided information on inspection and that your surveyor and conveyancer further confirm details. Also, market conditions and property values regularly fluctuate. And showcased sold properties demonstrate our previous successes rather than indicate live property values. *As advised by the owner. **Property sold subject to contract.



ALEX NEIL

ESTATE AGENTS SINCE 1984

2024 signifies our **40th Anniversary**, and we are immensely proud to have reached this impressive longevity milestone. In celebration, we launched an **exceptional promotion** for sellers, affording them increased marketing exposure for free!

40 years of expertise: With four decades of experience, we bring a wealth of knowledge and expertise. Our durability is a testament to the trust satisfied clients place in us. We understand the nuances of the diverse neighbourhoods we cover. Our local expertise allows us to provide tailored solutions, whether you're buying or selling, allowing you to move with confidence.



ALEX NEIL

ESTATE AGENTS SINCE 1984

www.alexneil.com