



FELIX POINT E14
1 bedroom apartment

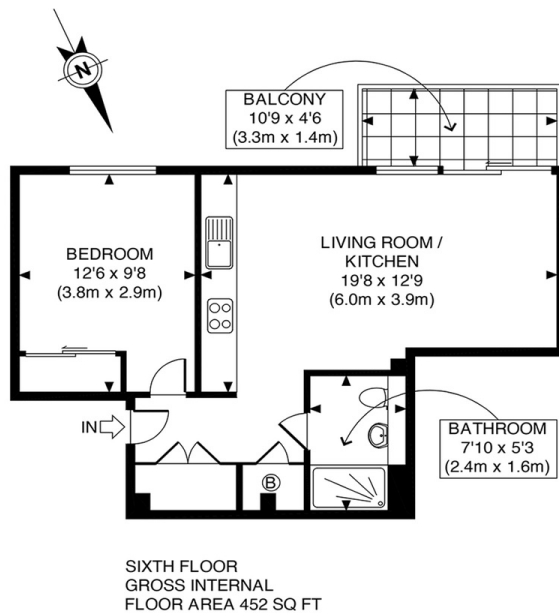
£350,000
SOLD



FELIX POINT E14

A stunning top-floor apartment in the highly esteemed Felix Point, New Festival Quarter, Poplar E14. The property benefits from high specifications, modern finishing, and a larger-than-average balcony with views towards Canary Wharf. Felix Point is a desirable location with easy access to Canary Wharf, The City and Stratford (Westfield shopping centre) via Westferry and Langdon Park DLR stations. New Festival Quarter is a landmark development in the heart of Poplar adjacent to Bartlett Park. Felix Point's excellent facilities include concierge service, a gymnasium, and communal roof terraces with breathtaking views over London. This property also benefits from a recently approved EWS1 certificate.

Borough: Tower Hamlets* Council Tax: C* EPC: C Lease Term: 238* Service Charge: £1,756* Ground Rent: £316*



APPROX. GROSS INTERNAL FLOOR AREA 452 SQ FT / 42 SQ.M

Canary Wharf & Docklands Office
2 Westferry Road, Canary Wharf, London E14 8JT

t: 020 7537 9859 e: canarywharf@alexneil.com

Disclaimer: Property descriptions are subjective and used in good faith as an opinion rather than statements of fact. The owner provided information relating to title, tenure, service charges and ground rent information. Therefore, please make specific enquiries to ensure that our descriptions match your expectations of the property. Floor plan measurements are approximate and for illustrative purposes only. Furthermore, we have not tested any services, systems or appliances at this property. And we strongly recommend that you verify all the provided information on inspection and that your surveyor and conveyancer further confirm details. Also, market conditions and property values regularly fluctuate. And showcased sold properties demonstrate our previous successes rather than indicate live property values. *As advised by the owner. **Property sold subject to contract.



ALEX NEIL

ESTATE AGENTS SINCE 1984