



HORIZONS TOWER E14
1 bedroom apartment

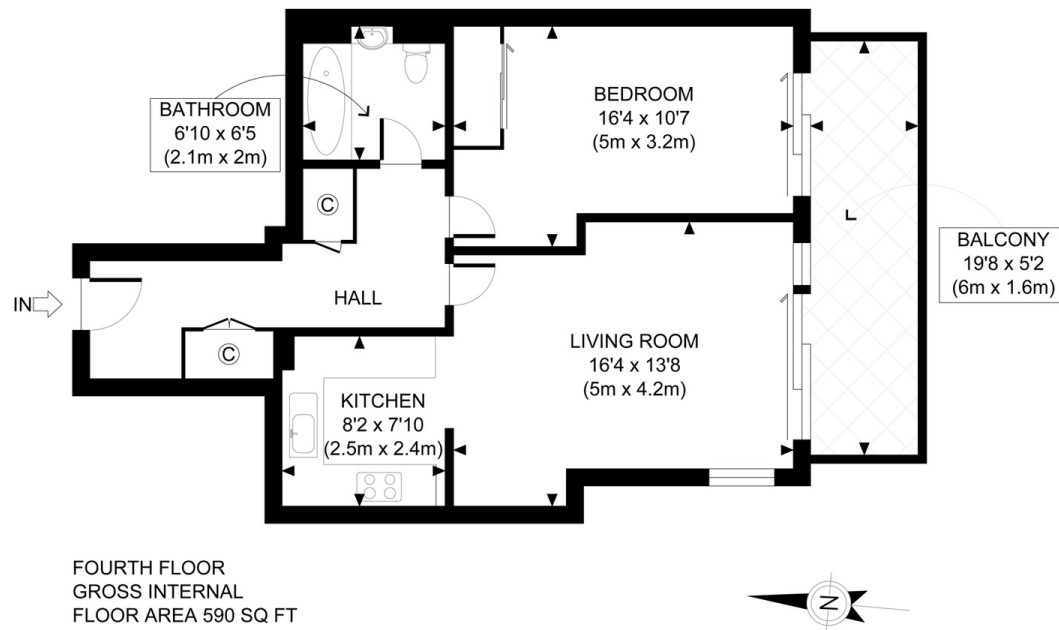
£375,000
SOLD



HORIZONS TOWER E14

This modern one-bedroom apartment is well-presented within the luxury development Horizons Tower, Yabsley Street, Canary Wharf, E14. With stunning views across the River Thames and the O2, this apartment has a high-end finish and a wealth of amenities. This apartment is sure to impress and comprises a spacious open-plan reception room/kitchen, a well-proportioned bedroom, a modern three-piece bathroom, a hallway with a storage area, and a larger-than-average balcony. Transport links from Blackwall (DLR) and Canary Wharf (Jubilee) offer access to Central London and surrounding areas.

Borough: Tower Hamlets* Council Tax: E* EPC: B Lease Term: 119* Service Charge: £2,400* Ground Rent: TBA



APPROX. GROSS INTERNAL FLOOR AREA 590 SQ FT / 55 SQM

Canary Wharf & Docklands Office
2 Westferry Road, Canary Wharf, London E14 8JT

t: 020 7537 9859 e: canarywharf@alexneil.com

Disclaimer: Property descriptions are subjective and used in good faith as an opinion rather than statements of fact. The owner provided information relating to title, tenure, service charges and ground rent information. Therefore, please make specific enquiries to ensure that our descriptions match your expectations of the property. Floor plan measurements are approximate and for illustrative purposes only. Furthermore, we have not tested any services, systems or appliances at this property. And we strongly recommend that you verify all the provided information on inspection and that your surveyor and conveyancer further confirm details. Also, market conditions and property values regularly fluctuate. And showcased sold properties demonstrate our previous successes rather than indicate live property values. *As advised by the owner. **Property sold subject to contract.



ALEX NEIL

ESTATE AGENTS SINCE 1984