



AURORA POINT SE16  
**3 bedroom apartment**

**£580,000**  
SOLD

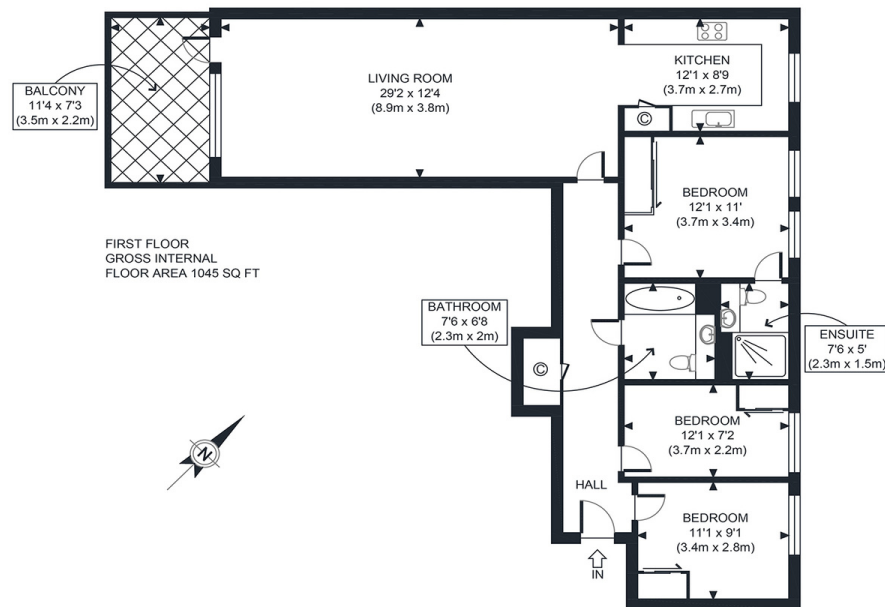




# AURORA POINT SE16

This immaculate modern apartment is in Aurora Point, Plough Way, Surrey Quays SE16, forming part of the highly esteemed Marine Wharf East Development. The apartment is finished to exacting standards throughout and boasts spacious rooms. The welcoming hallway approaches this impeccable apartment. It nicely flows to a large open-plan living room with a stylish kitchen with top-grade appliances, then round to three large bedrooms with an en-suite to the expansive main bedroom and another luxurious three-piece bathroom. The large private balcony affords a beautiful space for al fresco dining whilst overlooking the manicured communal grounds. The apartment also boasts allocated parking. Furthermore, the development enjoys a daytime concierge service and a gymnasium. Canada Water and Surrey Quays stations and local bus services offer convenience for commuters.

Borough: Lewisham\* Council Tax: E\* EPC: B Lease Term: 990\* Service Charge: £4,500\* Ground Rent: £550\*



APPROX. GROSS INTERNAL FLOOR AREA 1045 SQ FT / 97 SQM

**Rotherhithe & Bermondsey Office**  
146 Lower Road, London SE16 2UG

t: 020 7237 6767 e: [rotherhithe@alexneil.com](mailto:rotherhithe@alexneil.com)

Disclaimer: Property descriptions are subjective and used in good faith as an opinion rather than statements of fact. The owner provided information relating to title, tenure, service charges and ground rent information. Therefore, please make specific enquiries to ensure that our descriptions match your expectations of the property. Floor plan measurements are approximate and for illustrative purposes only. Furthermore, we have not tested any services, systems or appliances at this property. And we strongly recommend that you verify all the provided information on inspection and that your surveyor and conveyancer further confirm details. Also, market conditions and property values regularly fluctuate. And showcased sold properties demonstrate our previous successes rather than indicate live property values. \*As advised by the owner. \*\*Property sold subject to contract.



## ALEX NEIL

ESTATE AGENTS SINCE 1984