



OXLEY CLOSE SE1
2 bedroom terraced house

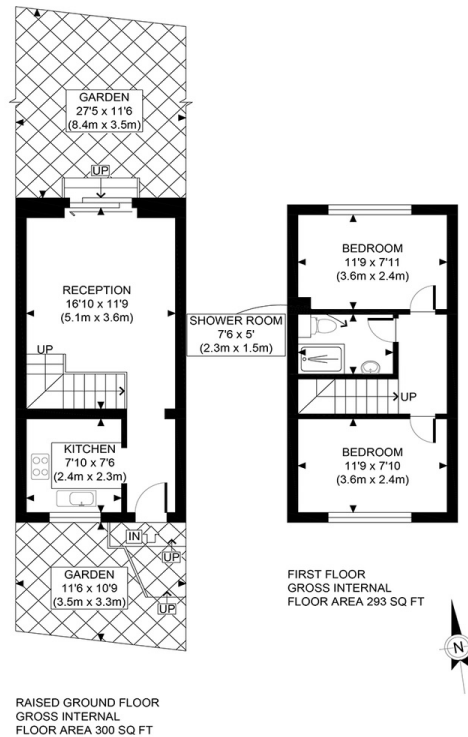
£485,000
SOLD



OXLEY CLOSE SE1

Presenting a beautiful two-bedroom terraced house in the remarkable Oxley Close, Bermondsey SE1. The accommodation consists of a large bright reception room opening to a well-maintained garden, a separate newly fitted kitchen, two double bedrooms and a recently fitted bathroom. This well-presented property benefits from modern decor, ample storage, and an allocated parking space. Oxley Close boasts a peaceful setting whilst remaining easily accessible to Old Kent Road's amenities and transport links and trendy Bermondsey. There is also easy access to the City, Tower Bridge and Canary Wharf. Burgess Park's stunning green open space is within easy reach and affords a picturesque setting for a stroll or a refreshing run around the large pond and the wildflowers.

Borough: Southwark* Council Tax: D* EPC: C



Rotherhithe & Bermondsey Office
146 Lower Road, London SE16 2UG

t: 020 7237 6767 e: rotherhithe@alexneil.com

Disclaimer: Property descriptions are subjective and used in good faith as an opinion rather than statements of fact. The owner provided information relating to title, tenure, service charges and ground rent information. Therefore, please make specific enquiries to ensure that our descriptions match your expectations of the property. Floor plan measurements are approximate and for illustrative purposes only. Furthermore, we have not tested any services, systems or appliances at this property. And we strongly recommend that you verify all the provided information on inspection and that your surveyor and conveyancer further confirm details. Also, market conditions and property values regularly fluctuate. And showcased sold properties demonstrate our previous successes rather than indicate live property values. *As advised by the owner. **Property sold subject to contract.

ALEX NEIL

ESTATE AGENTS SINCE 1984