



SKY VIEW TOWER E15
2 bedroom apartment

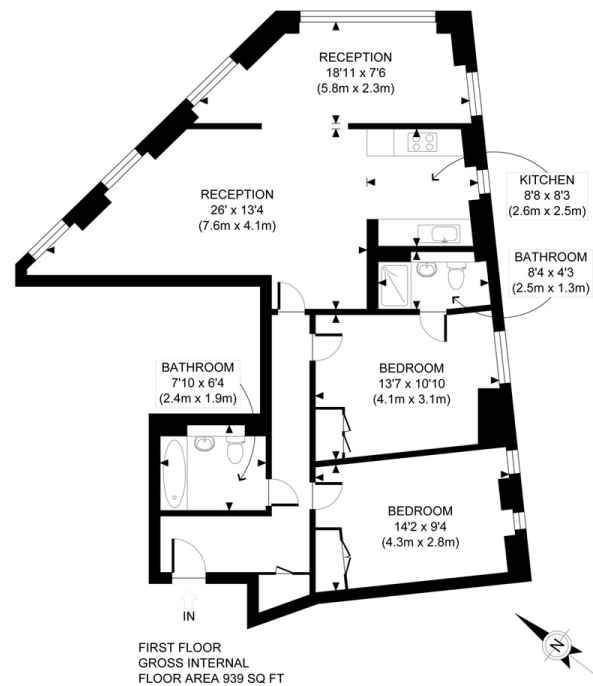
£515,000
SOLD



SKY VIEW TOWER E15

We present a stunning two-bedroom apartment within the highly esteemed and desirable Sky View Tower, High Street, Stratford E15. The apartment has been thoughtfully designed and takes advantage of its idyllic setting of the fifteenth floor with far-reaching views over London. Internally, the apartment has beautiful finishing, and the layout flows. The welcoming hallway leads to an expansive open-plan living area with a stylish fitted kitchen affording a wonderful space for entertaining friends and relaxing daily living. The two large bedrooms, the master with a chic en-suite and a contemporary three-piece bathroom complete the accommodation. An array of regular bus services, Pudding Mill Lane DLR Station and Bromley-By-Bow for the District and Hammersmith and City Lines well serve the apartment. In our opinion, Sky View Tower offers the best contemporary living in East London. We highly recommend organising your appointment to view it.

Borough: Newham* Council Tax: D* EPC: B Lease Term: 994* Service Charge: £4,000* Ground Rent: £400*



APPROX. GROSS INTERNAL FLOOR AREA 939 SQ FT / 87 SQM

Canary Wharf & Docklands Office

2 Westferry Road, Canary Wharf, London E14 8JT

t: 020 7537 9859 e: canarywharf@alexneil.com

Disclaimer: Property descriptions are subjective and used in good faith as an opinion rather than statements of fact. The owner provided information relating to title, tenure, service charges and ground rent information. Therefore, please make specific enquiries to ensure that our descriptions match your expectations of the property. Floor plan measurements are approximate and for illustrative purposes only. Furthermore, we have not tested any services, systems or appliances at this property. And we strongly recommend that you verify all the provided information on inspection and that your surveyor and conveyancer further confirm details. Also, market conditions and property values regularly fluctuate. And showcased sold properties demonstrate our previous successes rather than indicate live property values. *As advised by the owner. **Property sold subject to contract.



ALEX NEIL

ESTATE AGENTS SINCE 1984