



SKY VIEW TOWER E15
2 bedroom apartment

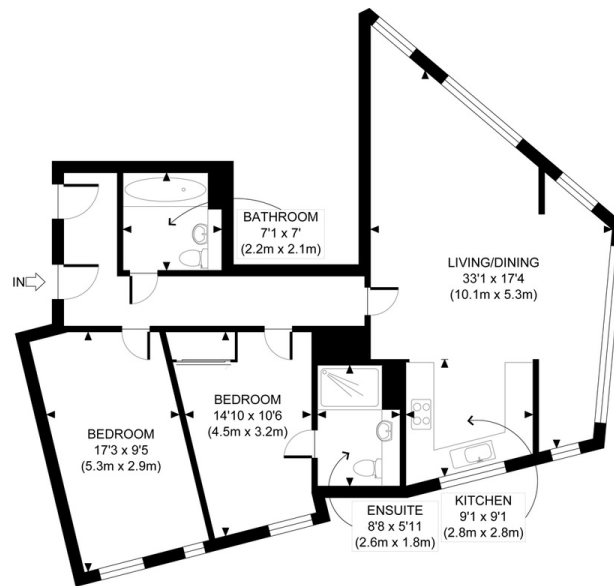
£530,000
SOLD



SKY VIEW TOWER E15

An impeccably presented two-bedroom apartment finished to exacting standards and set within the prestigious Sky View Tower, High Street, Stratford E15. The apartment takes advantage of its thirtieth-floor positioning with unparalleled views over London. The welcoming hallway leads to an expansive, dual-aspect, open-plan living area with a sleek kitchen. This comfortable living space is ideal for entertaining. The two large bedrooms include a chic en-suite to the main. A contemporary three-piece bathroom completes the accommodation. An array of regular bus services, Pudding Mill Lane DLR Station and Bromley-By-Bow for the District and Hammersmith and City Lines provide many commute options. Sky View Tower offers fantastic contemporary East London living, and we recommend your earliest viewing.

Borough: Newham* Council Tax: D* EPC: B Lease Term: 994 years* Service Charge: £3,100* Ground Rent: £400*
Nearest Station: Pudding Mill Lane (0.24 miles) Material Information: www.alexneil.com/material-information



THIRTIETH FLOOR
GROSS INTERNAL
FLOOR AREA 909 SQ FT

APPROX. GROSS INTERNAL FLOOR AREA 909 SQ FT / 84 SQM



Canary Wharf & Docklands Office
2 Westferry Road, Canary Wharf, London E14 8JT

t: 020 7537 9859 e: canarywharf@alexneil.com

Disclaimer: Property descriptions are subjective and used in good faith as an opinion rather than statements of fact. The owner provided information relating to title, tenure, service charges and ground rent information. Therefore, please make specific enquiries to ensure that our descriptions match your expectations of the property. Floor plan measurements are approximate and for illustrative purposes only. Furthermore, we have not tested any services, systems or appliances at this property. And we strongly recommend that you verify all the provided information on inspection and that your surveyor and conveyancer further confirm details. Also, market conditions and property values regularly fluctuate. And showcased sold properties demonstrate our previous successes rather than indicate live property values. *As advised by the owner. **Property sold subject to contract.

ALEX NEIL

ESTATE AGENTS SINCE 1984

2024 signifies our **40th Anniversary**, and we are immensely proud to have reached this impressive longevity milestone. In celebration, we launched an **exceptional promotion** for sellers, affording them increased marketing exposure for free!

40 years of expertise: With four decades of experience, we bring a wealth of knowledge and expertise. Our durability is a testament to the trust satisfied clients place in us. We understand the nuances of the diverse neighbourhoods we cover. Our local expertise allows us to provide tailored solutions, whether you're buying or selling, allowing you to move with confidence.



ALEX NEIL

ESTATE AGENTS SINCE 1984

www.alexneil.com