



HAMPTON GRANGE BR1
3 bedroom apartment

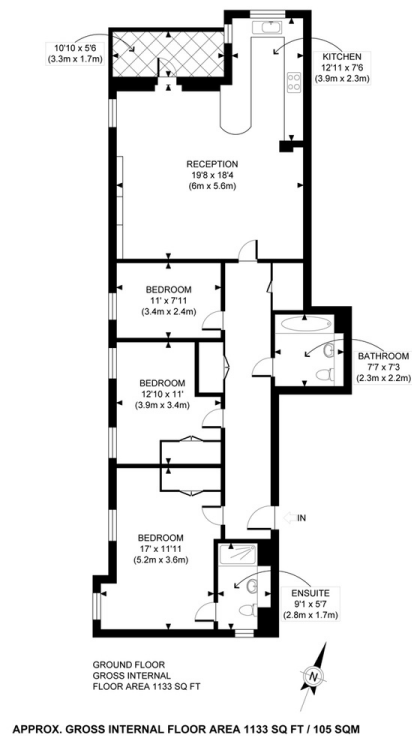
£630,000
SOLD



HAMPTON GRANGE BR1

This beautifully presented three-bedroom apartment is rare to the market, set on the first floor of Grade II listed Hampton Grange, forming part of the highly anticipated Marian Gardens, Bromley BR1. Marian Gardens is within approximately 10.5 acres of Parkland. This unique development provides an unparalleled lifestyle. The spectacular property comprises a large open-plan kitchen lounge, three large bedrooms with built-in wardrobes, an en-suite to the master and a stylish three-piece family bathroom. The property also benefits from a large balcony, ample storage space, a contemporary design, and two allocated parking spaces. Exceptionally placed on the edge of Sundridge Park, Hampton Grange lies on the outskirts of an area of sublime natural beauty, encompassing acres of ancient woodland with Sundridge Park Golf Course beyond. We highly recommend organising an appointment to view it.

Borough: Bromley* Council Tax: F* EPC: B Lease Term: 118 years* Service Charge: £3,450* Ground Rent: £350*
Nearest Station: Sundridge Park (0.31 miles) Material Information: www.alexneil.com/material-information



Chislehurst & Bromley Office
61 High Street, Chislehurst BR7 5AF

t: 020 8297 8800 e: chislehurst@alexneil.com

Disclaimer: Property descriptions are subjective and used in good faith as an opinion rather than statements of fact. The owner provided information relating to title, tenure, service charges and ground rent information. Therefore, please make specific enquiries to ensure that our descriptions match your expectations of the property. Floor plan measurements are approximate and for illustrative purposes only. Furthermore, we have not tested any services, systems or appliances at this property. And we strongly recommend that you verify all the provided information on inspection and that your surveyor and conveyancer further confirm details. Also, market conditions and property values regularly fluctuate. And showcased sold properties demonstrate our previous successes rather than indicate live property values. *As advised by the owner. **Property sold subject to contract.



ALEX NEIL

ESTATE AGENTS SINCE 1984

2024 signifies our **40th Anniversary**, and we are immensely proud to have reached this impressive longevity milestone. In celebration, we launched an **exceptional promotion** for sellers, affording them increased marketing exposure for free!

40 years of expertise: With four decades of experience, we bring a wealth of knowledge and expertise. Our durability is a testament to the trust satisfied clients place in us. We understand the nuances of the diverse neighbourhoods we cover. Our local expertise allows us to provide tailored solutions, whether you're buying or selling, allowing you to move with confidence.



ALEX NEIL

ESTATE AGENTS SINCE 1984

www.alexneil.com