



LANDMARK EAST TOWER E14
1 bedroom apartment

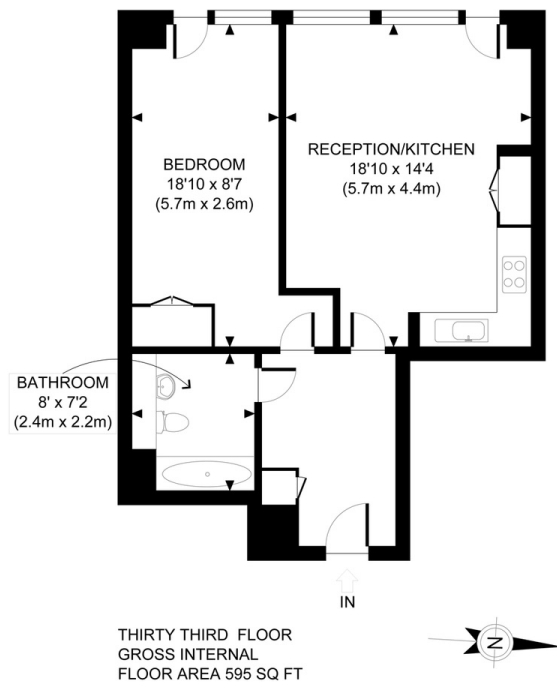
£575,000
SOLD



LANDMARK EAST TOWER E14

We present a stunning, light, bright one-bedroom apartment within The Landmark East Tower, Canary Wharf, E14. This beautifully presented apartment has been thoughtfully designed and boasts a fantastic layout, spanning almost 600 square feet and every part used to its fullest potential. The large and expansive rooms enhance the feeling of space, and the high-spec finish furthers the opulence of this luxurious home. Idyllically set on the thirty-third floor, taking full advantage of the far-reaching views over the River Thames and towards the iconic West London and the City skyline. The development itself features a 24-hour concierge and residents' private gym. Excellent transport links via Heron Quays DLR, a few minutes walk from Canary Wharf, giving access to the Jubilee Line and the eagerly awaited Crossrail. Thames Clipper Cruises also provides a regular service to Greenwich, the O2, and the West End.

Borough: Tower Hamlets* Council Tax: E* EPC: B Lease Term: 986 years* Service Charge: £3,463* Ground Rent: £500*
Nearest Station: Heron Quays (0.16 miles) Material Information: www.alexneil.com/material-information



APPROX. GROSS INTERNAL FLOOR AREA 595 SQ FT / 55 SQM

Canary Wharf & Docklands Office
2 Westferry Road, Canary Wharf, London E14 8JT

t: 020 7537 9859 e: canarywharf@alexneil.com

Disclaimer: Property descriptions are subjective and used in good faith as an opinion rather than statements of fact. The owner provided information relating to title, tenure, service charges and ground rent information. Therefore, please make specific enquiries to ensure that our descriptions match your expectations of the property. Floor plan measurements are approximate and for illustrative purposes only. Furthermore, we have not tested any services, systems or appliances at this property. And we strongly recommend that you verify all the provided information on inspection and that your surveyor and conveyancer further confirm details. Also, market conditions and property values regularly fluctuate. And showcased sold properties demonstrate our previous successes rather than indicate live property values. *As advised by the owner. **Property sold subject to contract.



ALEX NEIL

ESTATE AGENTS SINCE 1984