



FREDERICK SQUARE SE16  
**1 bedroom apartment**

**£325,000**  
SOLD

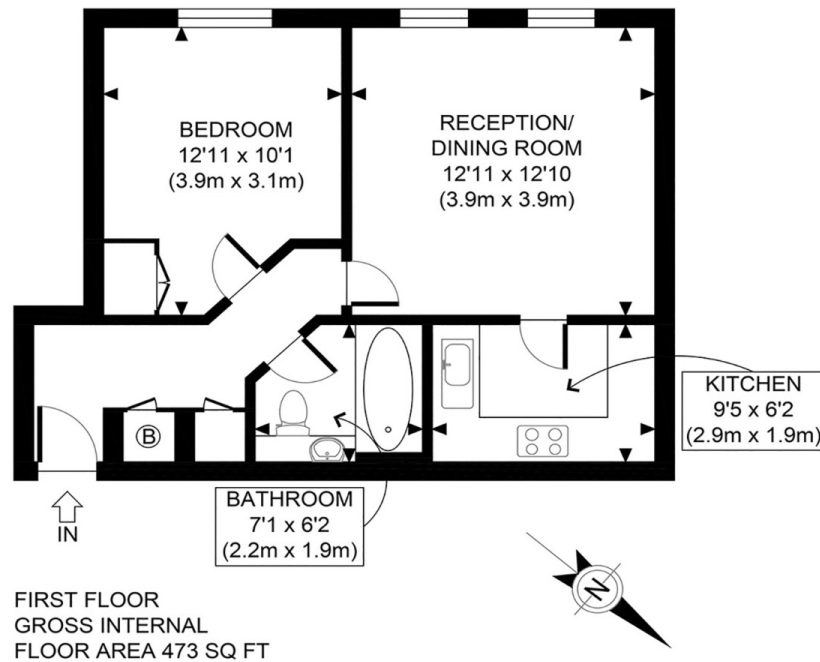




# FREDERICK SQUARE SE16

We present a sought-after one-bedroom riverside apartment in the highly desirable Frederick Square, Rotherhithe SE16, part of the gated Sovereign Crescent. The apartment is situated on the first floor and offers great living space with a bright living room that leads into a fully fitted kitchen. The well-proportioned double bedroom and a three-piece bathroom complete the accommodation. Benefits include underground parking and ample storage space. Frederick Square is close to Rotherhithe and Canada Water Stations, allowing easy connections to the City, West End and Canary Wharf. A fantastic selection of local amenities is within easy reach, adding to the convenience. Early viewing is advised as this great apartment will only stay on the market briefly.

Borough: Southwark\* Council Tax: D\* EPC: TBA Lease Term: 100 years\* Service Charge: £2,000\* Ground Rent: £150\*  
Nearest Station: Rotherhithe (0.63 miles) Material Information: [www.alexneil.com/material-information](http://www.alexneil.com/material-information)



APPROX. GROSS INTERNAL FLOOR AREA 473 SQ FT / 44 SQM

**Rotherhithe & Bermondsey Office**  
146 Lower Road, London SE16 2UG

t: 020 7237 6767 e: [rotherhithe@alexneil.com](mailto:rotherhithe@alexneil.com)

Disclaimer: Property descriptions are subjective and used in good faith as an opinion rather than statements of fact. The owner provided information relating to title, tenure, service charges and ground rent information. Therefore, please make specific enquiries to ensure that our descriptions match your expectations of the property. Floor plan measurements are approximate and for illustrative purposes only. Furthermore, we have not tested any services, systems or appliances at this property. And we strongly recommend that you verify all the provided information on inspection and that your surveyor and conveyancer further confirm details. Also, market conditions and property values regularly fluctuate. And showcased sold properties demonstrate our previous successes rather than indicate live property values. \*As advised by the owner. \*\*Property sold subject to contract.



## ALEX NEIL

ESTATE AGENTS SINCE 1984

2024 signifies our **40th Anniversary**, and we are immensely proud to have reached this impressive longevity milestone. In celebration, we launched an **exceptional promotion** for sellers, affording them increased marketing exposure for free!

**40 years of expertise:** With four decades of experience, we bring a wealth of knowledge and expertise. Our durability is a testament to the trust satisfied clients place in us. We understand the nuances of the diverse neighbourhoods we cover. Our local expertise allows us to provide tailored solutions, whether you're buying or selling, allowing you to move with confidence.



ALEX NEIL

ESTATE AGENTS SINCE 1984

[www.alexneil.com](http://www.alexneil.com)