



CHART HOUSE E14
studio apartment

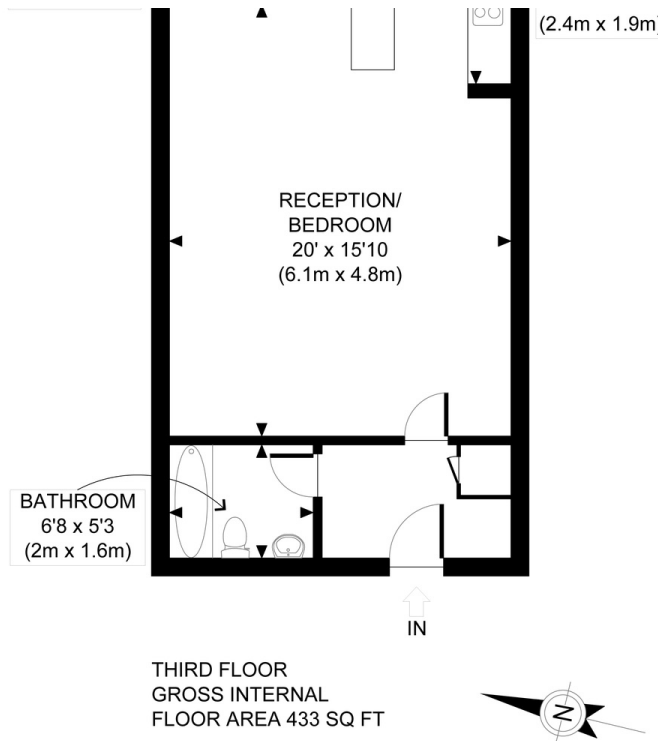
£280,000
SOLD



CHART HOUSE E14

An immaculately presented studio apartment within the popular Chart House, Burrells Wharf Square, Isle of Dogs E14. Steeped in history, the Burrells Wharf Square development boasts a peaceful, riverside setting and is highly sought after. This beautiful apartment boasts a well presented kitchen, spacious sleeping/living area with access to a private balcony boasting views of the Canary Wharf Skyline and a modern bathroom. There is also secure underground parking. Burrells Wharf offers superb Residents facilities such as a swimming pool, gymnasium, spa and concierge service. Set perfectly for Mudchute DLR and Mast House Terrace for the Thames Clipper providing access to Canary Wharf and the O2. There are an array of eateries and cosy pubs close to home, ideal for an impromptu meal out. This amazing property is not one to be missed and benefits from being sold chain free.

Borough: Tower Hamlets* Council Tax: D* EPC: B Lease Term: 92 years* Service Charge: £3,117* Ground Rent: £10*
Nearest Station: Mudchute (0.35 miles) Material Information: www.alexneil.com/material-information



Canary Wharf & Docklands Office
2 Westferry Road, Canary Wharf, London E14 8JT

t: 020 7537 9859 e: canarywharf@alexneil.com

Disclaimer: Property descriptions are subjective and used in good faith as an opinion rather than statements of fact. The owner provided information relating to title, tenure, service charges and ground rent information. Therefore, please make specific enquiries to ensure that our descriptions match your expectations of the property. Floor plan measurements are approximate and for illustrative purposes only. Furthermore, we have not tested any services, systems or appliances at this property. And we strongly recommend that you verify all the provided information on inspection and that your surveyor and conveyancer further confirm details. Also, market conditions and property values regularly fluctuate. And showcased sold properties demonstrate our previous successes rather than indicate live property values. *As advised by the owner. **Property sold subject to contract.

ALEX NEIL

ESTATE AGENTS SINCE 1984

2024 signifies our **40th Anniversary**, and we are immensely proud to have reached this impressive longevity milestone. In celebration, we launched an **exceptional promotion** for sellers, affording them increased marketing exposure for free!

40 years of expertise: With four decades of experience, we bring a wealth of knowledge and expertise. Our durability is a testament to the trust satisfied clients place in us. We understand the nuances of the diverse neighbourhoods we cover. Our local expertise allows us to provide tailored solutions, whether you're buying or selling, allowing you to move with confidence.



ALEX NEIL

ESTATE AGENTS SINCE 1984

www.alexneil.com