



SCHOOL HOUSE E14
2 bedroom apartment

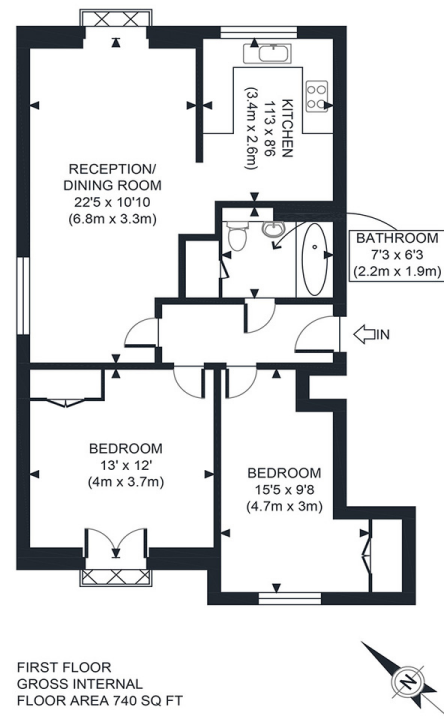
£400,000
SOLD



SCHOOL HOUSE E14

Favourably located within a peaceful, private residential development, this stunning two-bedroom apartment is in the School House, Pelling Street, Limehouse Cut, Poplar E14. Whilst also perfectly set for the commuter, accessing the hustle and bustle of vibrant Canary Wharf is simple or travelling further afield via Westferry DLR Station or the numerous local bus routes. Crisp Street Market and its diverse cuisines and stalls are within easy reach to enjoy a break from the norm and the local shops. Tesco Express and Lidl make picking up some essentials easy and add to this great apartment's convenient setting. The generous accommodation comprises a spacious reception room, a fully fitted kitchen, two large double bedrooms and a stylish three-piece bathroom suite. There is no onward chain, and we recommend your earliest internal inspection.

Borough: Tower Hamlets* Council Tax: D* EPC: B Lease Term: 104 years* Service Charge: £1,800* Ground Rent: £200*
Nearest Station: Westferry (0.28 miles) Material Information: www.alexneil.com/material-information



APPROX. GROSS INTERNAL FLOOR AREA 740 SQ FT / 69 SQM



Canary Wharf & Docklands Office
2 Westferry Road, Canary Wharf, London E14 8JT

t: 020 7537 9859 e: canarywharf@alexneil.com

Disclaimer: Property descriptions are subjective and used in good faith as an opinion rather than statements of fact. The owner provided information relating to title, tenure, service charges and ground rent information. Therefore, please make specific enquiries to ensure that our descriptions match your expectations of the property. Floor plan measurements are approximate and for illustrative purposes only. Furthermore, we have not tested any services, systems or appliances at this property. And we strongly recommend that you verify all the provided information on inspection and that your surveyor and conveyancer further confirm details. Also, market conditions and property values regularly fluctuate. And showcased sold properties demonstrate our previous successes rather than indicate live property values. *As advised by the owner. **Property sold subject to contract.

ALEX NEIL

ESTATE AGENTS SINCE 1984

2024 signifies our **40th Anniversary**, and we are immensely proud to have reached this impressive longevity milestone. In celebration, we launched an **exceptional promotion** for sellers, affording them increased marketing exposure for free!

40 years of expertise: With four decades of experience, we bring a wealth of knowledge and expertise. Our durability is a testament to the trust satisfied clients place in us. We understand the nuances of the diverse neighbourhoods we cover. Our local expertise allows us to provide tailored solutions, whether you're buying or selling, allowing you to move with confidence.



ALEX NEIL

ESTATE AGENTS SINCE 1984

www.alexneil.com