



SOUTHMERE HOUSE E15
1 bedroom apartment

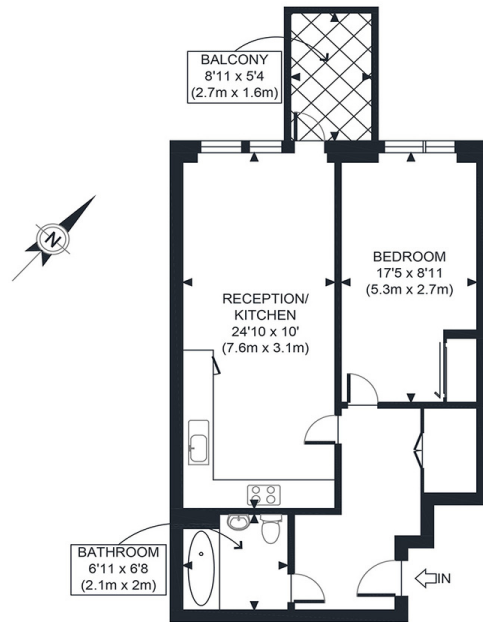
£385,000
SOLD



SOUTHMERE HOUSE E15

This beautiful one-bedroom apartment in Southmere House, Highland Street, Stratford E15, forms part of Bellway Homes' Legacy Wharf development. The apartment has extensive views across Olympic Park. The large west-facing balcony has no balcony above and overlooks the residents' courtyard. The internal accommodation comprises a roomy open-plan reception area. Floor-to-ceiling windows enhance the natural light and views of the development and beyond. The well-equipped modern kitchen has extensive storage. Additionally, built-in wardrobes feature in the large bedroom and there is also a stylish bathroom. Residents enjoy excellent facilities, including a roof terrace with views of the London skyline, a gym and concierge services. Legacy Wharf is a popular residential area near Stratford, Pudding Mill Lane and Bromley-by-Bow stations. Just 15 minutes from Canary Wharf and a short walk to Olympic Park, the convenient travel connections contribute to the development's popularity.

Borough: Tower Hamlets* Council Tax: C* EPC: B Lease Term: 996* Service Charge: £1,800* Ground Rent: £300*



APPROX. GROSS INTERNAL FLOOR AREA 578 SQ FT / 54 SQM

Canary Wharf & Docklands Office
2 Westferry Road, Canary Wharf, London E14 8JT

t: 020 7537 9859 e: canarywharf@alexneil.com

Disclaimer: Property descriptions are subjective and used in good faith as an opinion rather than statements of fact. The owner provided information relating to title, tenure, service charges and ground rent information. Therefore, please make specific enquiries to ensure that our descriptions match your expectations of the property. Floor plan measurements are approximate and for illustrative purposes only. Furthermore, we have not tested any services, systems or appliances at this property. And we strongly recommend that you verify all the provided information on inspection and that your surveyor and conveyancer further confirm details. Also, market conditions and property values regularly fluctuate. And showcased sold properties demonstrate our previous successes rather than indicate live property values. *As advised by the owner. **Property sold subject to contract.



ALEX NEIL

ESTATE AGENTS SINCE 1984