



APOLLO BUILDING E14
2 bedroom apartment

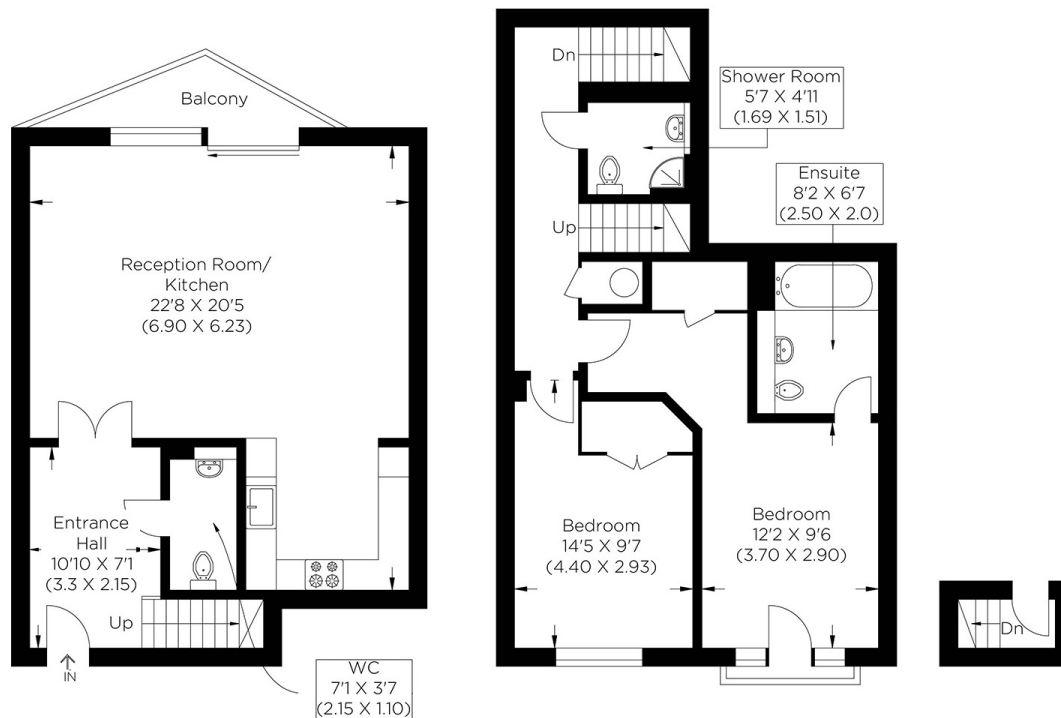
£600,000
SOLD



APOLLO BUILDING E14

This fantastic two double-bedroom duplex apartment is in the Apollo Building, Newton Place, Isle of Dogs E14. The large entrance hall of the apartment leads to the spacious open-plan living area, which boasts an elegant integrated kitchen. The southerly River Thames views from the balcony are extensive. The second floor comprises a main bedroom with incredible views, an en-suite, built-in wardrobes and a Juliet balcony. There is a separate shower room, and the second double bedroom has fitted wardrobes. The Odyssey has many facilities, including a secure entry system, porter services, lift access, a gymnasium and an allocated parking space. The Apollo Building's perfect location allows swift access into Canary Wharf and central London from nearby Mudchute DLR. We advise booking an early viewing appointment.

Borough: Tower Hamlets* Council Tax: F* EPC: B Lease Term: 103* Service Charge: £4,617* Ground Rent: £390*



Approximate gross internal area
99.51 sq m / 1071.11 sq ft



Canary Wharf & Docklands Office
2 Westferry Road, Canary Wharf, London E14 8JT

t: 020 7537 9859 e: canarywharf@alexneil.com

Disclaimer: Property descriptions are subjective and used in good faith as an opinion rather than statements of fact. The owner provided information relating to title, tenure, service charges and ground rent information. Therefore, please make specific enquiries to ensure that our descriptions match your expectations of the property. Floor plan measurements are approximate and for illustrative purposes only. Furthermore, we have not tested any services, systems or appliances at this property. And we strongly recommend that you verify all the provided information on inspection and that your surveyor and conveyancer further confirm details. Also, market conditions and property values regularly fluctuate. And showcased sold properties demonstrate our previous successes rather than indicate live property values. *As advised by the owner. **Property sold subject to contract.

ALEX NEIL

ESTATE AGENTS SINCE 1984