



LANGBOURNE PLACE E14
2 bedroom apartment

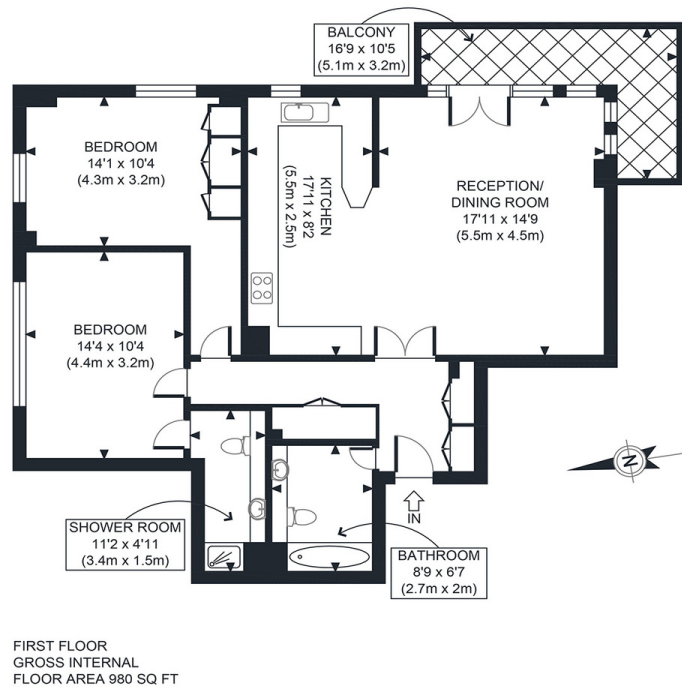
£625,000
SOLD



LANGBOURNE PLACE E14

This stunning, two-double-bedroom apartment has panoramic views of Canary Wharf and the river is in the coveted Langbourne Place development, Isle of Dogs, E14. Internally, the property boasts around one thousand square feet of internal space and includes a large open plan kitchen/reception room with floor-to-ceiling windows, which leads out onto a fantastic private wrap-around balcony with river views, a fully integrated kitchen, a main bedroom with a stylish en-suite bathroom, a second bedroom and four-piece family bathroom suite. Langbourne Place is a securely gated development ideally located for several shops, restaurants and bars and within easy reach of the Greenwich Foot Tunnel, furthering the fantastic eateries and unique retailers. Island Gardens DLR station is just moments away, providing easy connections to Canary Wharf and Bank station.

Borough: Tower Hamlets* Council Tax: E* EPC: B Lease Term: 976 years* Service Charge: £5,452* Ground Rent: £200*
Nearest Station: Island Gardens (0.29 miles) Material Information: www.alexneil.com/material-information



APPROX. GROSS INTERNAL FLOOR AREA 980 SQ FT / 91 SQM

Canary Wharf & Docklands Office
2 Westferry Road, Canary Wharf, London E14 8JT

t: 020 7537 9859 e: canarywharf@alexneil.com

Disclaimer: Property descriptions are subjective and used in good faith as an opinion rather than statements of fact. The owner provided information relating to title, tenure, service charges and ground rent information. Therefore, please make specific enquiries to ensure that our descriptions match your expectations of the property. Floor plan measurements are approximate and for illustrative purposes only. Furthermore, we have not tested any services, systems or appliances at this property. And we strongly recommend that you verify all the provided information on inspection and that your surveyor and conveyancer further confirm details. Also, market conditions and property values regularly fluctuate. And showcased sold properties demonstrate our previous successes rather than indicate live property values. *As advised by the owner. **Property sold subject to contract.



ALEX NEIL

ESTATE AGENTS SINCE 1984