



REVELEY SQUARE SE16  
**2 bedroom terraced house**

**£530,000**  
SOLD



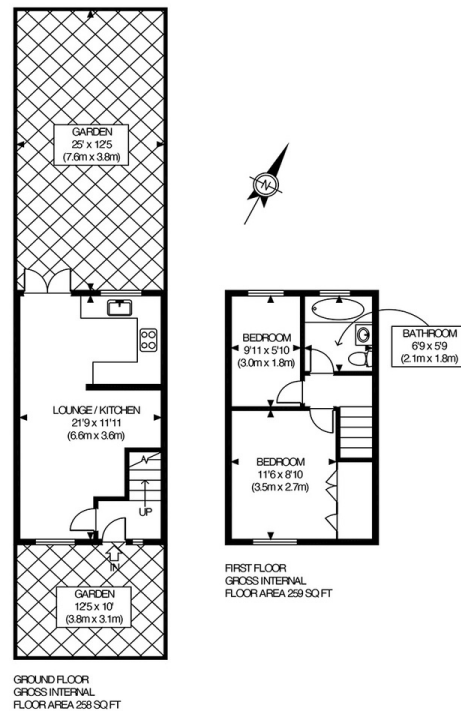


# REVELEY SQUARE SE16

We present a rare opportunity to buy a highly sought-after two-bedroom house in peaceful Reveley Square, Rotherhithe SE16. The house has a welcoming entrance that takes you to a good-sized reception room, with room to accommodate a dining area and home office and also leads to the well-planned kitchen. There is also access to a low-maintenance, private garden. The first floor offers a well-proportioned double bedroom with fitted storage, an inviting second bedroom and a fully tiled three-piece bathroom with a shower over the bath. This superb home further benefits from off-street parking and gas central heating. Canada Water and Surrey Quays stations are within easy reach. Surrey Quays shopping centre is also nearby, affording absolute convenience. The picturesque Russia Dock Woodland and Stave Hill Ecological Park offer the perfect walking route and some views toward Canary Wharf and The City.

Borough: Southwark\* Council Tax: D\* EPC: C

Nearest Station: Canada Water (0.62 miles) Material Information: [www.alexneil.com/material-information](http://www.alexneil.com/material-information)



**Rotherhithe & Bermondsey Office**  
146 Lower Road, London SE16 2UG

t: 020 7237 6767 e: [rotherhithe@alexneil.com](mailto:rotherhithe@alexneil.com)

Disclaimer: Property descriptions are subjective and used in good faith as an opinion rather than statements of fact. The owner provided information relating to title, tenure, service charges and ground rent information. Therefore, please make specific enquiries to ensure that our descriptions match your expectations of the property. Floor plan measurements are approximate and for illustrative purposes only. Furthermore, we have not tested any services, systems or appliances at this property. And we strongly recommend that you verify all the provided information on inspection and that your surveyor and conveyancer further confirm details. Also, market conditions and property values regularly fluctuate. And showcased sold properties demonstrate our previous successes rather than indicate live property values. \*As advised by the owner. \*\*Property sold subject to contract.



# ALEX NEIL

ESTATE AGENTS SINCE 1984

2024 signifies our **40th Anniversary**, and we are immensely proud to have reached this impressive longevity milestone. In celebration, we launched an **exceptional promotion** for sellers, affording them increased marketing exposure for free!

**40 years of expertise:** With four decades of experience, we bring a wealth of knowledge and expertise. Our durability is a testament to the trust satisfied clients place in us. We understand the nuances of the diverse neighbourhoods we cover. Our local expertise allows us to provide tailored solutions, whether you're buying or selling, allowing you to move with confidence.



ALEX NEIL

ESTATE AGENTS SINCE 1984

[www.alexneil.com](http://www.alexneil.com)