



GOODHART PLACE E14
1 bedroom apartment

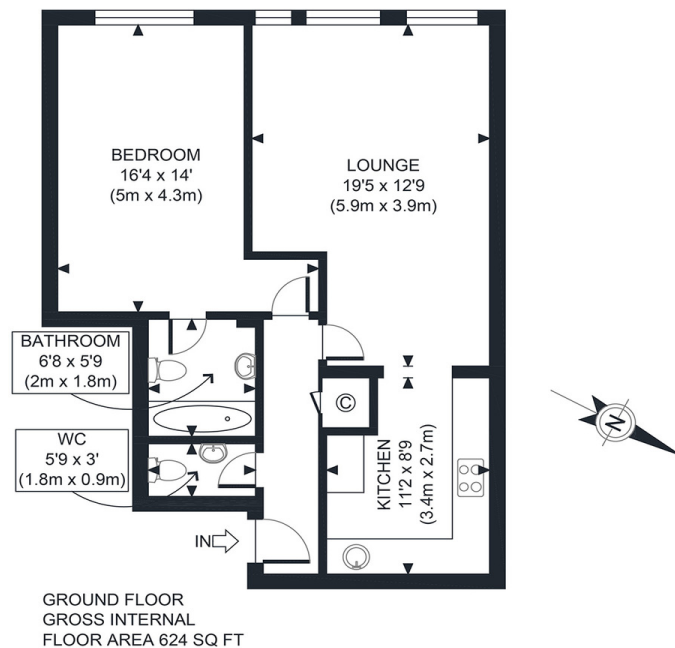
£425,000
SOLD



GOODHART PLACE E14

We present a fantastic opportunity to acquire this spacious one-bedroom flat in Goodhart Place, Limehouse Basin, E14. This apartment has been carefully designed to a very high standard, benefiting from a large, bright reception room with floor-to-ceiling windows. The apartment further benefits from a semi-open plan kitchen, a large double bedroom with an en-suite bathroom, an additional WC and wash basin and a secure parking space. The owners completed a fantastic refurbishment of this apartment, and it is beautifully presented throughout, ready for the new owner. Goodhart Place is a private gated development located on the southern edge of the Limehouse Basin. Goodhart Place is well-regarded with a day porter and forms around a communal terrace garden. Limehouse DLR is a short walk across the basin, taking you into the city), Canary Wharf, and various other routes, including Stratford International, Greenwich and London City Airport.

Borough: Tower Hamlets* Council Tax: D* EPC: C Lease Term: 165 years* Service Charge: £2,800* Ground Rent: £150*
Nearest Station: Limehouse (0.17 miles) Material Information: www.alexneil.com/material-information



APPROX. GROSS INTERNAL FLOOR AREA 624 SQ FT / 58 SQM

Canary Wharf & Docklands Office
2 Westferry Road, Canary Wharf, London E14 8JT

t: 020 7537 9859 e: canarywharf@alexneil.com

Disclaimer: Property descriptions are subjective and used in good faith as an opinion rather than statements of fact. The owner provided information relating to title, tenure, service charges and ground rent information. Therefore, please make specific enquiries to ensure that our descriptions match your expectations of the property. Floor plan measurements are approximate and for illustrative purposes only. Furthermore, we have not tested any services, systems or appliances at this property. And we strongly recommend that you verify all the provided information on inspection and that your surveyor and conveyancer further confirm details. Also, market conditions and property values regularly fluctuate. And showcased sold properties demonstrate our previous successes rather than indicate live property values. *As advised by the owner. **Property sold subject to contract.



ALEX NEIL

ESTATE AGENTS SINCE 1984