



ABBOTTS WHARF E14
1 bedroom apartment

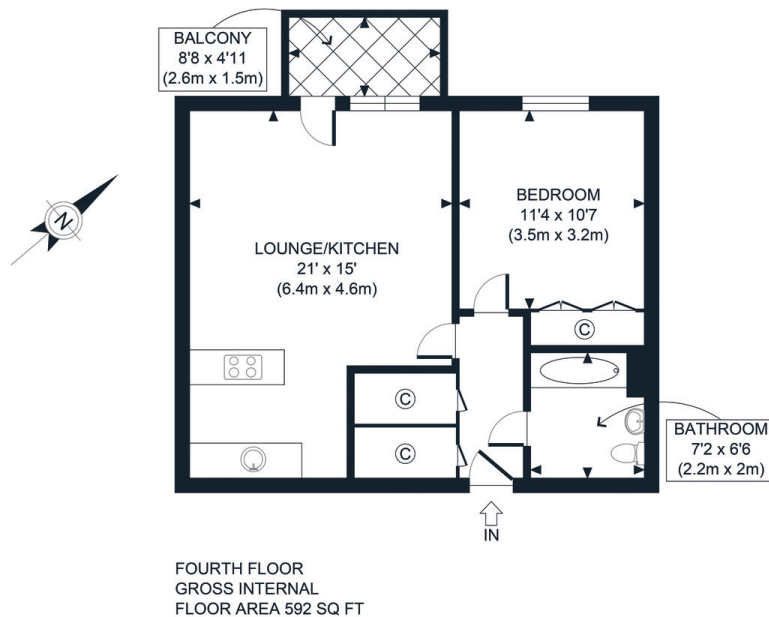
£325,000
SOLD



ABBOTTS WHARF E14

This immaculately presented one-bedroom apartment is in the highly desirable Abbots Wharf, Limehouse Cut, Poplar E14. The flats' elevated fourth floor boasts stunning views towards Canary Wharf and the Canal. The accommodation comprises a large open-plan lounge and kitchen, direct access to a large terrace, perfect for some al fresco dining, a spacious double bedroom and a modern three-piece bathroom. This unique property is tastefully decorated to a very high standard. Abbots Wharf is on the idyllic and sought-after Limehouse Cut and benefits from many local transport options in and out of the City. The property boasts many features, including breathtaking views from the full-length private balcony, lift access and a 24-hour concierge service. Early viewing is advised.

Borough: Tower Hamlets* Council Tax: D* EPC: C Lease Term: 982 years* Service Charge: £2,600* Ground Rent: £250*
Nearest Station: Westferry (0.41 miles) Material Information: www.alexneil.com/material-information



APPROX. GROSS INTERNAL FLOOR AREA 592 SQ FT / 55 SQM	Abbots Wharf
Disclaimer: Floor plan measurements are approximate and are for illustrative purposes only. While we do not doubt the floor plan accuracy and completeness, you or your advisors should conduct a careful, independent investigation of the property in respect of monetary valuation	date 25/02/22
	photoplan



Canary Wharf & Docklands Office
2 Westferry Road, Canary Wharf, London E14 8JT

t: 020 7537 9859 e: canarywharf@alexneil.com

Disclaimer: Property descriptions are subjective and used in good faith as an opinion rather than statements of fact. The owner provided information relating to title, tenure, service charges and ground rent information. Therefore, please make specific enquiries to ensure that our descriptions match your expectations of the property. Floor plan measurements are approximate and for illustrative purposes only. Furthermore, we have not tested any services, systems or appliances at this property. And we strongly recommend that you verify all the provided information on inspection and that your surveyor and conveyancer further confirm details. Also, market conditions and property values regularly fluctuate. And showcased sold properties demonstrate our previous successes rather than indicate live property values. *As advised by the owner. **Property sold subject to contract.

ALEX NEIL

ESTATE AGENTS SINCE 1984