



CHART HOUSE E14
2 bedroom apartment

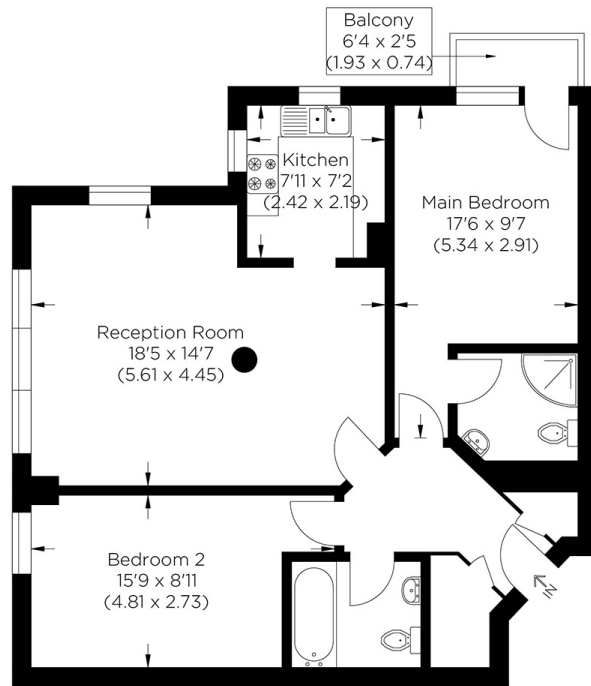
£475,000
SOLD



CHART HOUSE E14

This contemporary two double-bedroom apartment is in a sought-after residential development Chart House, Burrells Wharf Square, Isle of Dogs E14. The apartment boasts stunning views of the river, a bright living room with ample natural light, a fully fitted modern kitchen, two double bedrooms, a three-piece family bathroom, and an en-suite shower room in the main bedroom. Other features include a private balcony off the main bedroom, underground parking, beautiful views over the Thames, and modern decor, all tastefully designed. The excellent resident facilities include a gymnasium and swimming pool. Burrells Wharf is off Westferry Road, just over a mile from Canary Wharf, which offers many shops, trendy bars, and restaurants.

Borough: Tower Hamlets* Council Tax: E* EPC: C Lease Term: 92* Service Charge: £5,087* Ground Rent: £10*



Second Floor
Approximate Gross Internal Area
68.40 sq m / 736.25 sq ft

Canary Wharf & Docklands Office
2 Westferry Road, Canary Wharf, London E14 8JT

t: 020 7537 9859 e: canarywharf@alexneil.com

Disclaimer: Property descriptions are subjective and used in good faith as an opinion rather than statements of fact. The owner provided information relating to title, tenure, service charges and ground rent information. Therefore, please make specific enquiries to ensure that our descriptions match your expectations of the property. Floor plan measurements are approximate and for illustrative purposes only. Furthermore, we have not tested any services, systems or appliances at this property. And we strongly recommend that you verify all the provided information on inspection and that your surveyor and conveyancer further confirm details. Also, market conditions and property values regularly fluctuate. And showcased sold properties demonstrate our previous successes rather than indicate live property values. *As advised by the owner. **Property sold subject to contract.



ALEX NEIL

ESTATE AGENTS SINCE 1984