



DEE STREET E14
1 bedroom maisonette

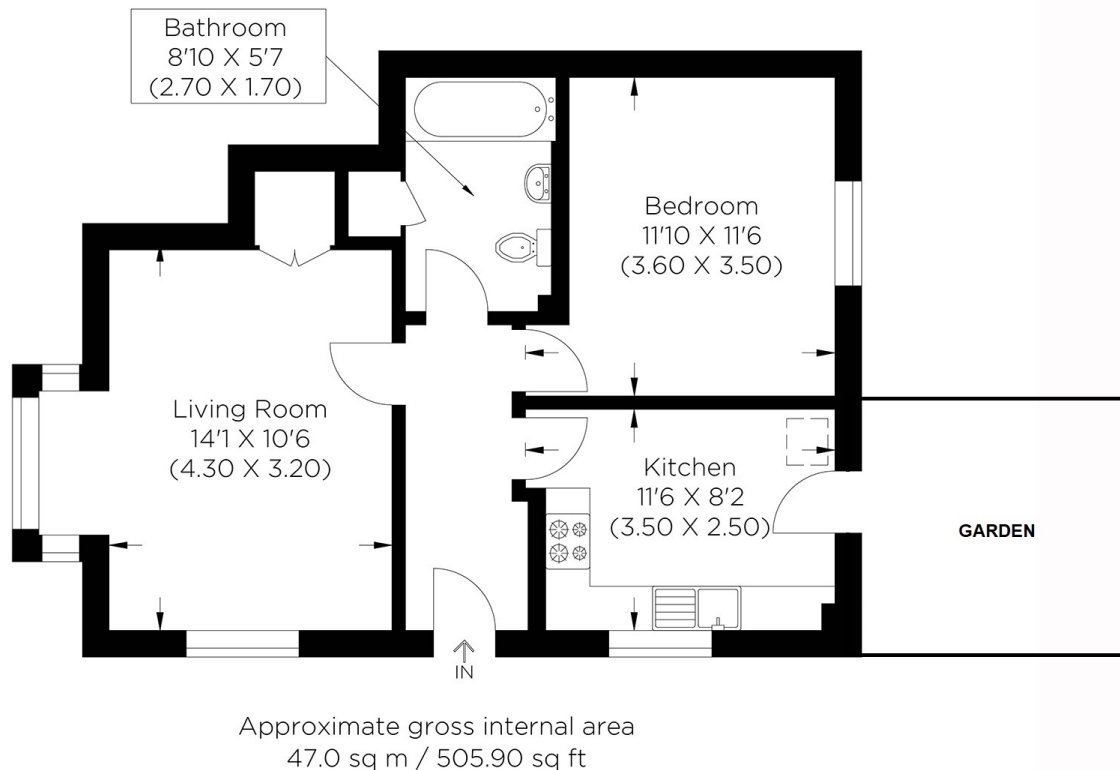
£300,000
SOLD



DEE STREET E14

A stunning one bedroom apartment with an expansive private garden situated on Dee Street, Aberfeldy Village, E14. The apartment is in immaculate condition throughout and benefits from an abundance of natural light. Set in a tranquil residential neighbourhood, this beautifully presented apartment comprises of a spacious dual aspect lounge, a large double bedroom and a separate fully fitted kitchen with new integrated appliances with ample storage throughout. The apartment also benefits from a modern three piece bathroom suite and has a luxury of a private rear garden and an allocated parking space. The apartment is conveniently located within easy reach from East India DLR and Canning Town Jubilee stations providing residents with quick and convenient access to City, Canary Wharf and West London. The apartment is being sold chain free, so early viewing is advised.

Borough: Tower Hamlets* Council Tax: C* EPC: C Lease Term: 110* Service Charge: £626* Ground Rent: £10*



Canary Wharf & Docklands Office
2 Westferry Road, Canary Wharf, London E14 8JT

t: 020 7537 9859 e: canarywharf@alexneil.com

Disclaimer: Property descriptions are subjective and used in good faith as an opinion rather than statements of fact. The owner provided information relating to title, tenure, service charges and ground rent information. Therefore, please make specific enquiries to ensure that our descriptions match your expectations of the property. Floor plan measurements are approximate and for illustrative purposes only. Furthermore, we have not tested any services, systems or appliances at this property. And we strongly recommend that you verify all the provided information on inspection and that your surveyor and conveyancer further confirm details. Also, market conditions and property values regularly fluctuate. And showcased sold properties demonstrate our previous successes rather than indicate live property values. *As advised by the owner. **Property sold subject to contract.



ALEX NEIL

ESTATE AGENTS SINCE 1984