



THE GRAINSTORE E16
2 bedroom apartment

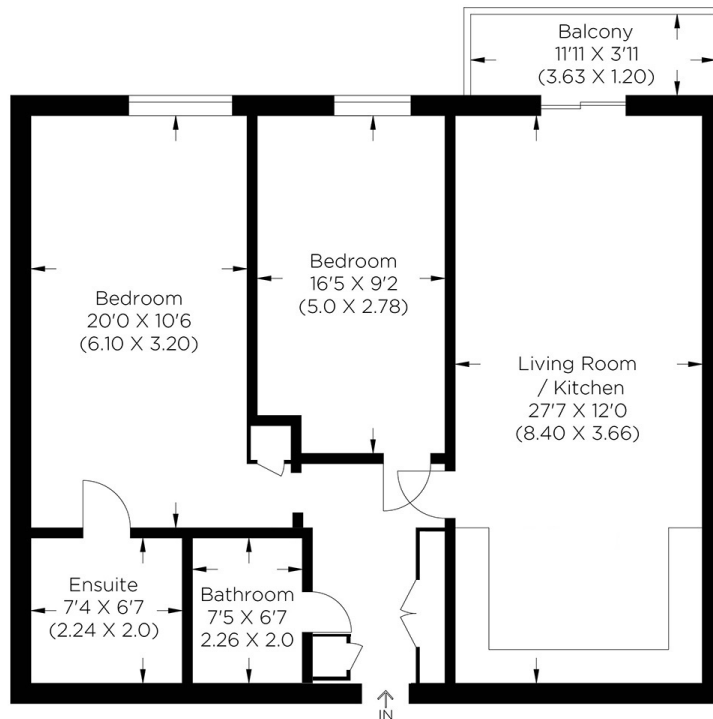
£425,000
SOLD



THE GRAINSTORE E16

This well-presented two-bedroom apartment is in The Grainstore, Western Gateway E16. This property comprises a spacious living room and a separate kitchen with integrated appliances. Both bedrooms are of double size and presented to a high standard. There is a family bathroom, and the main bedroom has an en-suite. This fantastic apartment is part of a former warehouse conveniently nestled between two of Europe's biggest Financial districts and near London's Excel. The development is proximate to the new Crossrail, Royal Victoria DLR, Excel Centre and Emirates Cable Car to the O2 Arena. Local amenities such as bars, restaurants, cafes and hotels are all within walking distance. The Grainstore benefits from a concierge service and is being sold chain free.

Borough: Newham* Council Tax: E* EPC: C Lease Term: 177 years* Service Charge: £3,685* Ground Rent: £350*
Nearest Station: Custom House (0.14 miles) Material Information: www.alexneil.com/material-information



Approximate gross internal area
83.50 sq m / 898.78 sq ft

Canary Wharf & Docklands Office
2 Westferry Road, Canary Wharf, London E14 8JT

t: 020 7537 9859 e: canarywharf@alexneil.com

Disclaimer: Property descriptions are subjective and used in good faith as an opinion rather than statements of fact. The owner provided information relating to title, tenure, service charges and ground rent information. Therefore, please make specific enquiries to ensure that our descriptions match your expectations of the property. Floor plan measurements are approximate and for illustrative purposes only. Furthermore, we have not tested any services, systems or appliances at this property. And we strongly recommend that you verify all the provided information on inspection and that your surveyor and conveyancer further confirm details. Also, market conditions and property values regularly fluctuate. And showcased sold properties demonstrate our previous successes rather than indicate live property values. *As advised by the owner. **Property sold subject to contract.



ALEX NEIL

ESTATE AGENTS SINCE 1984

2024 signifies our **40th Anniversary**, and we are immensely proud to have reached this impressive longevity milestone. In celebration, we launched an **exceptional promotion** for sellers, affording them increased marketing exposure for free!

40 years of expertise: With four decades of experience, we bring a wealth of knowledge and expertise. Our durability is a testament to the trust satisfied clients place in us. We understand the nuances of the diverse neighbourhoods we cover. Our local expertise allows us to provide tailored solutions, whether you're buying or selling, allowing you to move with confidence.



ALEX NEIL

ESTATE AGENTS SINCE 1984

www.alexneil.com