



CLAREMONT HOUSE SE16
3 bedroom apartment

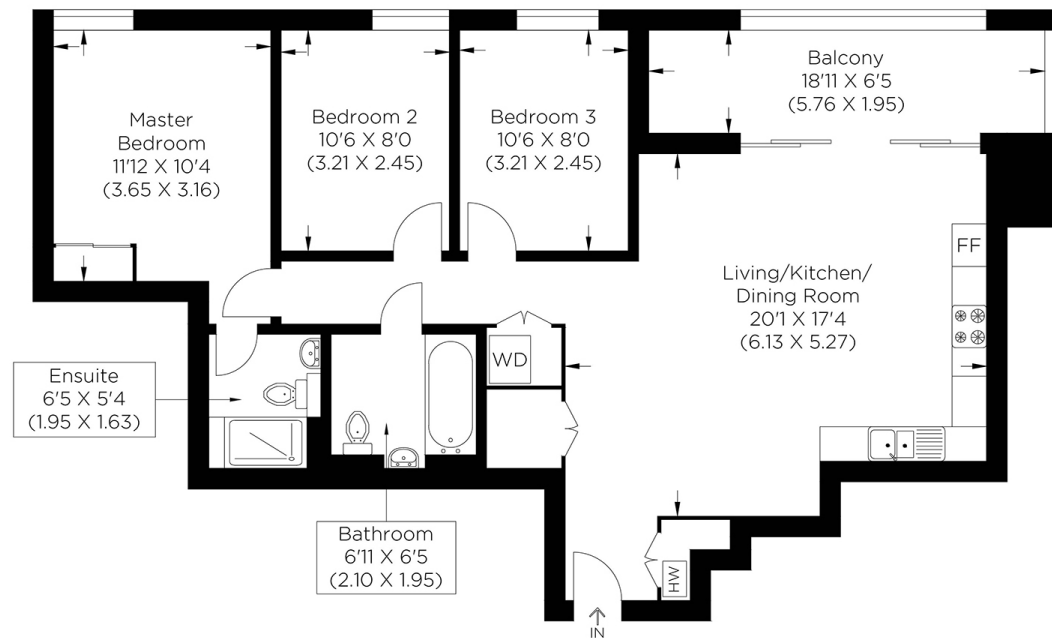
£700,000
SOLD



CLAREMONT HOUSE SE16

Exuding elegance and finished to an exacting standard, is this superb three bedroom apartment. Located in a highly desired development in SE16 and set on the second floor of Claremont House, Maple Way, Canada Water. The large private balcony commands stunning views over the inner garden and affords a wonderful space to relax and unwind. Internally, the neutrally decorated rooms are formed of a bright and spacious open-plan living space; ideally configured for both comfortable living and entertaining friends, three large bedrooms, master with en-suite and a modern three-piece family bathroom. The vast amenities within the development include a daytime concierge service. The wonderful green space of Stave Hill Ecological Park offers an attractive back drop for a weekend stroll affording breath taking views across London. Rarely available to the market and offered chain free, we anticipate much interest, so your earliest viewing is advised.

Borough: Southwark* Council Tax: F* EPC: B Lease Term: 993 years* Service Charge: £3,445* Ground Rent: TBA
Nearest Station: Canada Water (0.34 miles) Material Information: www.alexneil.com/material-information



Apartment 78 Floor 2

Approximate gross internal area
76.30 sq m / 821.0 sq ft

Rotherhithe & Bermondsey Office
146 Lower Road, London SE16 2UG

t: 020 7237 6767 e: rotherhithe@alexneil.com

Disclaimer: Property descriptions are subjective and used in good faith as an opinion rather than statements of fact. The owner provided information relating to title, tenure, service charges and ground rent information. Therefore, please make specific enquiries to ensure that our descriptions match your expectations of the property. Floor plan measurements are approximate and for illustrative purposes only. Furthermore, we have not tested any services, systems or appliances at this property. And we strongly recommend that you verify all the provided information on inspection and that your surveyor and conveyancer further confirm details. Also, market conditions and property values regularly fluctuate. And showcased sold properties demonstrate our previous successes rather than indicate live property values. *As advised by the owner. **Property sold subject to contract.



ALEX NEIL

ESTATE AGENTS SINCE 1984

2024 signifies our **40th Anniversary**, and we are immensely proud to have reached this impressive longevity milestone. In celebration, we launched an **exceptional promotion** for sellers, affording them increased marketing exposure for free!

40 years of expertise: With four decades of experience, we bring a wealth of knowledge and expertise. Our durability is a testament to the trust satisfied clients place in us. We understand the nuances of the diverse neighbourhoods we cover. Our local expertise allows us to provide tailored solutions, whether you're buying or selling, allowing you to move with confidence.



ALEX NEIL

ESTATE AGENTS SINCE 1984

www.alexneil.com