



HICKMAN CLOSE E16
4 bedroom end of terrace

£475,000
SOLD

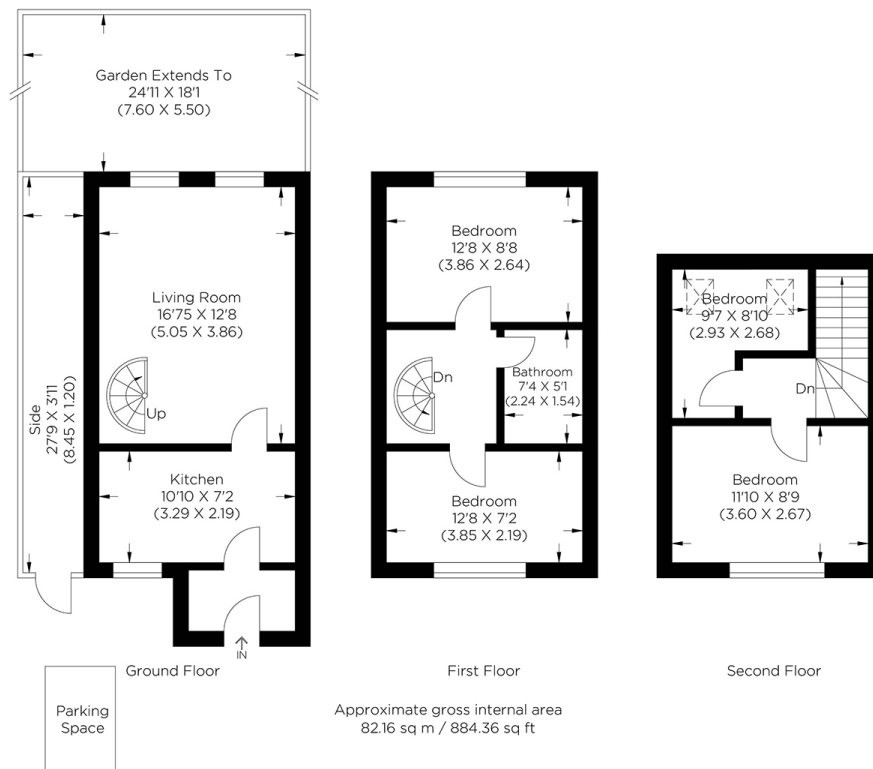


HICKMAN CLOSE E16

This four-bedroom house in Hickman Close, Beckton District Park, E16, is arranged over three floors and boasts ample living accommodation. The current owners extended the house, boosting space throughout. The accommodation comprises a recently modernised kitchen separate from the beautifully decorated living space, leading to a fantastic-sized garden. The first and second floors have four spacious bedrooms with ample storage. You access the modern three-piece family bathroom from the first floor. Hickman Close is on a quiet residential road, a short walk to Royal Albert DLR next to the Asian Business Port, Custom House and Cross Rail. The DLR will take you to Canary Wharf in less than twenty minutes.

Borough: Newham* Council Tax: C* EPC: C

Nearest Station: Prince Regent (0.56 miles) Material Information: www.alexneil.com/material-information



Canary Wharf & Docklands Office
2 Westferry Road, Canary Wharf, London E14 8JT

t: 020 7537 9859 e: canarywharf@alexneil.com

Disclaimer: Property descriptions are subjective and used in good faith as an opinion rather than statements of fact. The owner provided information relating to title, tenure, service charges and ground rent information. Therefore, please make specific enquiries to ensure that our descriptions match your expectations of the property. Floor plan measurements are approximate and for illustrative purposes only. Furthermore, we have not tested any services, systems or appliances at this property. And we strongly recommend that you verify all the provided information on inspection and that your surveyor and conveyancer further confirm details. Also, market conditions and property values regularly fluctuate. And showcased sold properties demonstrate our previous successes rather than indicate live property values. *As advised by the owner. **Property sold subject to contract.



ALEX NEIL

ESTATE AGENTS SINCE 1984