



FRIARS MEAD E14
3 bedroom semi-detached house

£850,000
SOLD

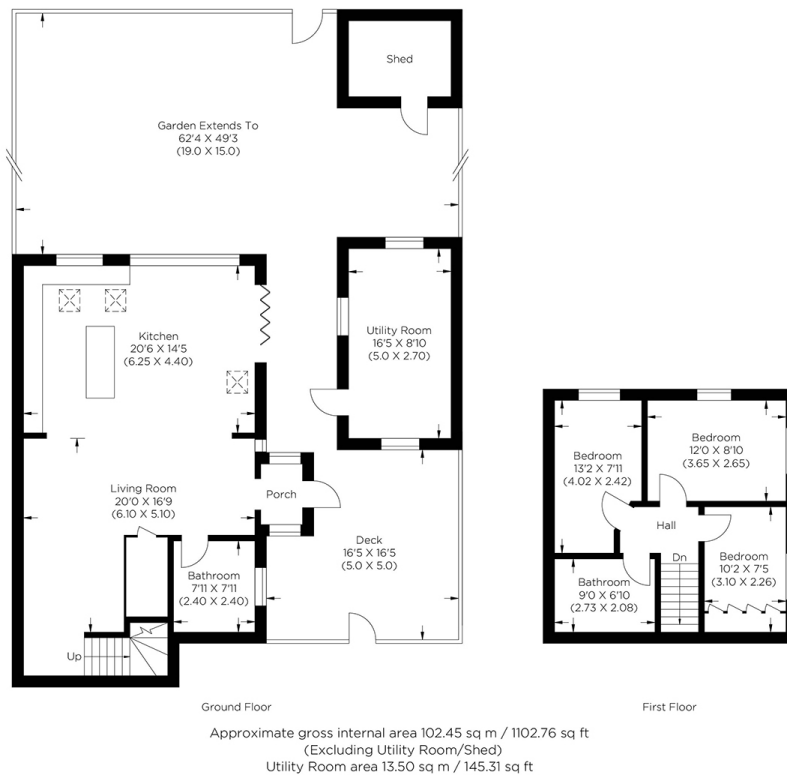


FRIARS MEAD E14

A stunning example of contemporary living situated on Friars Mead, Isle of Dogs, E14. This family home offers plenty of natural light and well-proportioned rooms throughout, with abundant, well-manicured outside space that offers direct sunlight all day. This beautifully presented home benefits from a stunning high-specification open plan kitchen/living room, perfect for al fresco dining and entertaining, finished to a charming standard. Floor-to-ceiling bi-fold doors open onto an extensive landscaped west-facing private garden. The three well-proportioned bedrooms have ample wardrobe space, and two immaculately finished bathrooms complete the accommodation. Friars Mead is ideally located for Crossharbour, Mudchute and Island Gardens DLR, allowing quick access to Canary Wharf. Also conveniently close to local schools, supermarkets, and shops and with the Greenwich Foot Tunnel allowing for easy access to Greenwich.

Borough: Tower Hamlets* Council Tax: E* EPC: C

Nearest Station: Crossharbour (0.21 miles) Material Information: www.alexneil.com/material-information



Canary Wharf & Docklands Office
2 Westferry Road, Canary Wharf, London E14 8JT

t: 020 7537 9859 e: canarywharf@alexneil.com

Disclaimer: Property descriptions are subjective and used in good faith as an opinion rather than statements of fact. The owner provided information relating to title, tenure, service charges and ground rent information. Therefore, please make specific enquiries to ensure that our descriptions match your expectations of the property. Floor plan measurements are approximate and for illustrative purposes only. Furthermore, we have not tested any services, systems or appliances at this property. And we strongly recommend that you verify all the provided information on inspection and that your surveyor and conveyancer further confirm details. Also, market conditions and property values regularly fluctuate. And showcased sold properties demonstrate our previous successes rather than indicate live property values. *As advised by the owner. **Property sold subject to contract.

ALEX NEIL

ESTATE AGENTS SINCE 1984

2024 signifies our **40th Anniversary**, and we are immensely proud to have reached this impressive longevity milestone. In celebration, we launched an **exceptional promotion** for sellers, affording them increased marketing exposure for free!

40 years of expertise: With four decades of experience, we bring a wealth of knowledge and expertise. Our durability is a testament to the trust satisfied clients place in us. We understand the nuances of the diverse neighbourhoods we cover. Our local expertise allows us to provide tailored solutions, whether you're buying or selling, allowing you to move with confidence.



ALEX NEIL

ESTATE AGENTS SINCE 1984

www.alexneil.com