



APOLLO BUILDING E14
2 bedroom apartment

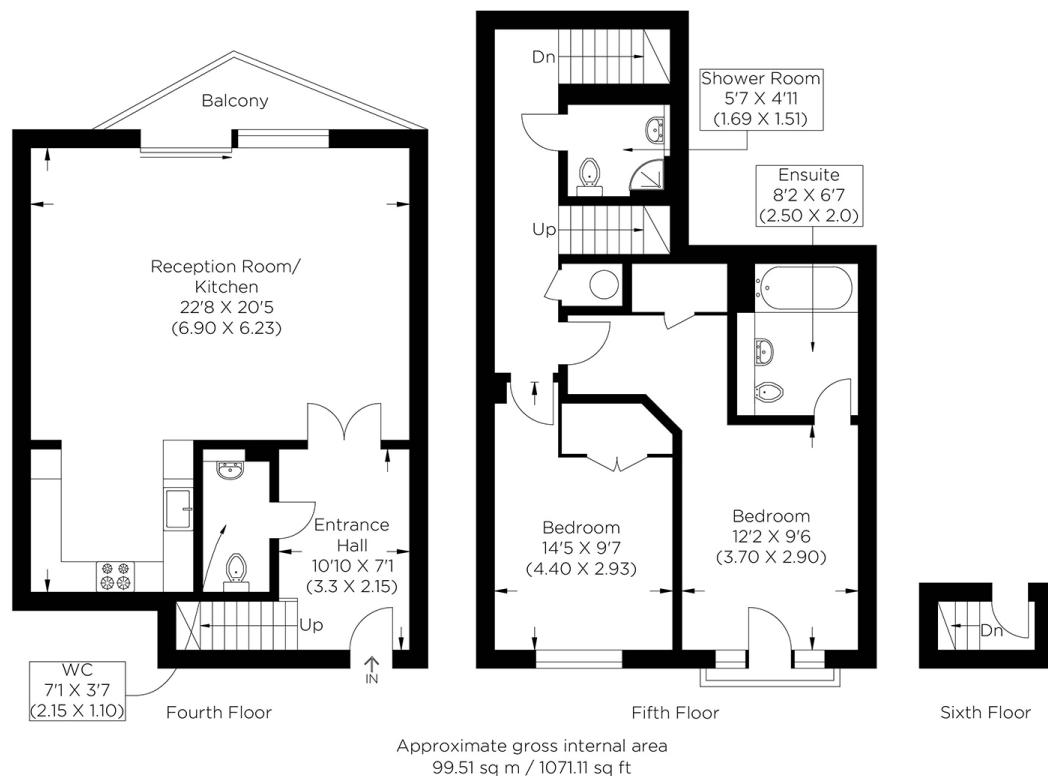
£600,000
SOLD



APOLLO BUILDING E14

We present a stunning two double-bedroom duplex apartment in The Odyssey, Apollo Building, Newton Place, Isle of Dogs E14. This fourth-floor apartment has charming views. The accommodation comprises a large hallway, guest toilet, and spacious open-plan living space boasting a stylish integrated kitchen. A south-facing private balcony overlooks the River Thames, with far-reaching views. The second floor comprises a main bedroom with en-suite and built-in wardrobes. The Juliet style balcony offers incredible views of Canary Wharf, a separate shower suite and a generously sized second bedroom with fitted wardrobes. The development benefits from a secure entry system, porter, lift facilities, gymnasium and an allocated parking space. The Apollo Building is ideal for swift access into Canary Wharf and central London, with Mudchute DLR just a short walk away.

Borough: Tower Hamlets* Council Tax: F* EPC: B Lease Term: 104 years* Service Charge: £4,479* Ground Rent: £200*
Nearest Station: Mudchute (0.49 miles) Material Information: www.alexneil.com/material-information



Canary Wharf & Docklands Office
2 Westferry Road, Canary Wharf, London E14 8JT

t: 020 7537 9859 e: canarywharf@alexneil.com

Disclaimer: Property descriptions are subjective and used in good faith as an opinion rather than statements of fact. The owner provided information relating to title, tenure, service charges and ground rent information. Therefore, please make specific enquiries to ensure that our descriptions match your expectations of the property. Floor plan measurements are approximate and for illustrative purposes only. Furthermore, we have not tested any services, systems or appliances at this property. And we strongly recommend that you verify all the provided information on inspection and that your surveyor and conveyancer further confirm details. Also, market conditions and property values regularly fluctuate. And showcased sold properties demonstrate our previous successes rather than indicate live property values. *As advised by the owner. **Property sold subject to contract.



ALEX NEIL

ESTATE AGENTS SINCE 1984