



METTALICA COURT E14  
**2 bedroom apartment**

**£550,000**  
SOLD

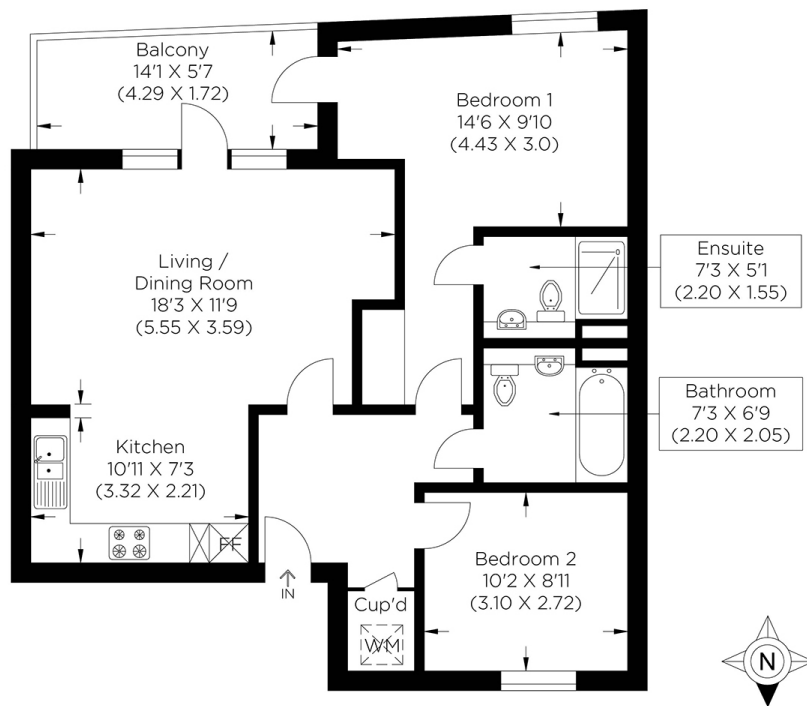




# METTALICA COURT E14

Mettalica Court, Rolling Mills Mews, E14, is in a highly sought-after new development in the heart of Limehouse. This modern, spacious two-bedroom apartment has stylish decor and ample living space. The property comprises a larger-than-average open-plan lounge and sleek kitchen with direct access to a south-facing private balcony, a generous-sized main bedroom with an en-suite, a second bedroom and a modern three-piece bathroom. The nearby Thames Path leads to a scenic walk along the picturesque Limehouse Marina, a calm oasis amidst the hustle and bustle of London. Continue to the River Thames for a refreshing drink at one of the riverside bars or restaurants, or head on to enjoy the highlights of Canary Wharf, all within a 15-minute walk. The convenient Limehouse Station also provides excellent transport links to the City, Canary Wharf and beyond.

Borough: Tower Hamlets\* Council Tax: D\* EPC: B Lease Term: 187 years\* Service Charge: £3,350\* Ground Rent: £300\*  
Nearest Station: Limehouse (0.18 miles) Material Information: [www.alexneil.com/material-information](http://www.alexneil.com/material-information)



**Canary Wharf & Docklands Office**  
2 Westferry Road, Canary Wharf, London E14 8JT

t: 020 7537 9859 e: [canarywharf@alexneil.com](mailto:canarywharf@alexneil.com)

Disclaimer: Property descriptions are subjective and used in good faith as an opinion rather than statements of fact. The owner provided information relating to title, tenure, service charges and ground rent information. Therefore, please make specific enquiries to ensure that our descriptions match your expectations of the property. Floor plan measurements are approximate and for illustrative purposes only. Furthermore, we have not tested any services, systems or appliances at this property. And we strongly recommend that you verify all the provided information on inspection and that your surveyor and conveyancer further confirm details. Also, market conditions and property values regularly fluctuate. And showcased sold properties demonstrate our previous successes rather than indicate live property values. \*As advised by the owner. \*\*Property sold subject to contract.



## ALEX NEIL

ESTATE AGENTS SINCE 1984

2024 signifies our **40th Anniversary**, and we are immensely proud to have reached this impressive longevity milestone. In celebration, we launched an **exceptional promotion** for sellers, affording them increased marketing exposure for free!

**40 years of expertise:** With four decades of experience, we bring a wealth of knowledge and expertise. Our durability is a testament to the trust satisfied clients place in us. We understand the nuances of the diverse neighbourhoods we cover. Our local expertise allows us to provide tailored solutions, whether you're buying or selling, allowing you to move with confidence.



ALEX NEIL

ESTATE AGENTS SINCE 1984

[www.alexneil.com](http://www.alexneil.com)