



MALMO TOWER SE8
2 bedroom apartment

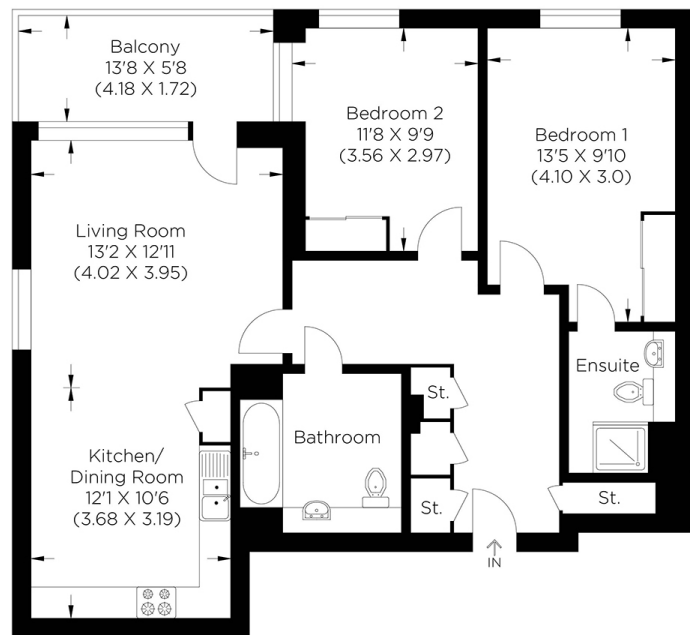
£565,000
SOLD



MALMO TOWER SE8

This stunning two-bedroom fourth-floor apartment in Malmo Tower, Bailey Street, Deptford SE8, forms part of the highly desirable Greenland Place Development. The property affords excellent resident facilities, including an attentive concierge service and a gymnasium. Internally, the apartment comprises a spacious lounge with direct access to a superb private balcony offering far-reaching, stunning views over the landscaped garden, a large open-plan modern kitchen, two double bedrooms, an en-suite to the master and a stylish three-piece family bathroom. Transport links are excellent from nearby Canada Water and Surrey Quays stations, and Surrey Quays retail hub is easily accessible, offering the utmost convenience. Many local eateries allow for a varied choice, making each time you eat out like a new experience. In addition, the green spaces of Deptford Park and Southwark Park provide a picturesque setting to enjoy some exercise.

Borough: Lewisham* Council Tax: C* EPC: B Lease Term: 994 years* Service Charge: £2,400* Ground Rent: £350*
Nearest Station: Surrey Quays (0.48 miles) Material Information: www.alexneil.com/material-information



Approximate gross internal area
77.30 sq m / 832.0 sq ft



Rotherhithe & Bermondsey Office
146 Lower Road, London SE16 2UG

t: 020 7237 6767 e: rotherhithe@alexneil.com

Disclaimer: Property descriptions are subjective and used in good faith as an opinion rather than statements of fact. The owner provided information relating to title, tenure, service charges and ground rent information. Therefore, please make specific enquiries to ensure that our descriptions match your expectations of the property. Floor plan measurements are approximate and for illustrative purposes only. Furthermore, we have not tested any services, systems or appliances at this property. And we strongly recommend that you verify all the provided information on inspection and that your surveyor and conveyancer further confirm details. Also, market conditions and property values regularly fluctuate. And showcased sold properties demonstrate our previous successes rather than indicate live property values. *As advised by the owner. **Property sold subject to contract.

ALEX NEIL

ESTATE AGENTS SINCE 1984

2024 signifies our **40th Anniversary**, and we are immensely proud to have reached this impressive longevity milestone. In celebration, we launched an **exceptional promotion** for sellers, affording them increased marketing exposure for free!

40 years of expertise: With four decades of experience, we bring a wealth of knowledge and expertise. Our durability is a testament to the trust satisfied clients place in us. We understand the nuances of the diverse neighbourhoods we cover. Our local expertise allows us to provide tailored solutions, whether you're buying or selling, allowing you to move with confidence.



ALEX NEIL

ESTATE AGENTS SINCE 1984

www.alexneil.com