



LOCKSONS CLOSE E14
2 bedroom apartment

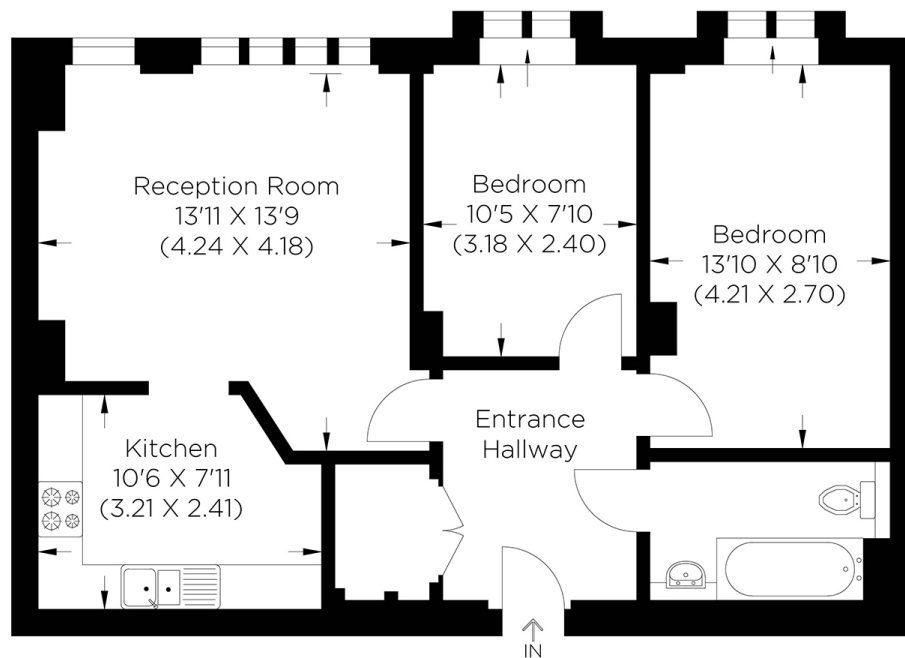
£350,000
SOLD



LOCKSONS CLOSE E14

An immaculately presented two-bedroom apartment set within Locksons Close, Poplar E14, a highly desirable secure gated development on a quiet residential road. This spacious apartment boasts a welcoming entrance hall leading to a semi-open plan kitchen and reception area with a Juliet balcony enjoying stunning views towards Canary Wharf. It also leads to two generous bedrooms and a contemporary family bathroom. Locksons Close is within easy reach of the beautiful space of Bartlett Park. It is close to Langdon Park DLR and other excellent transport links allowing easy access to Canary Wharf and local amenities. The fantastic position of this apartment is furthered by the effortless access to the Limehouse Cut, affording a peaceful setting for a weekend stroll. We highly recommend internal viewings.

Borough: Tower Hamlets* Council Tax: D* EPC: TBA Lease Term: 134 years* Service Charge: £2,538* Ground Rent: £207*
Nearest Station: Langdon Park (0.26 miles) Material Information: www.alexneil.com/material-information



Approximate gross internal area
58.69 sq m / 631.73 sq ft

Canary Wharf & Docklands Office
2 Westferry Road, Canary Wharf, London E14 8JT

t: 020 7537 9859 e: canarywharf@alexneil.com

Disclaimer: Property descriptions are subjective and used in good faith as an opinion rather than statements of fact. The owner provided information relating to title, tenure, service charges and ground rent information. Therefore, please make specific enquiries to ensure that our descriptions match your expectations of the property. Floor plan measurements are approximate and for illustrative purposes only. Furthermore, we have not tested any services, systems or appliances at this property. And we strongly recommend that you verify all the provided information on inspection and that your surveyor and conveyancer further confirm details. Also, market conditions and property values regularly fluctuate. And showcased sold properties demonstrate our previous successes rather than indicate live property values. *As advised by the owner. **Property sold subject to contract.



ALEX NEIL

ESTATE AGENTS SINCE 1984

2024 signifies our **40th Anniversary**, and we are immensely proud to have reached this impressive longevity milestone. In celebration, we launched an **exceptional promotion** for sellers, affording them increased marketing exposure for free!

40 years of expertise: With four decades of experience, we bring a wealth of knowledge and expertise. Our durability is a testament to the trust satisfied clients place in us. We understand the nuances of the diverse neighbourhoods we cover. Our local expertise allows us to provide tailored solutions, whether you're buying or selling, allowing you to move with confidence.



ALEX NEIL

ESTATE AGENTS SINCE 1984

www.alexneil.com