



KERENSKY HOUSE E14  
**1 bedroom apartment**

**£375,000**  
SOLD

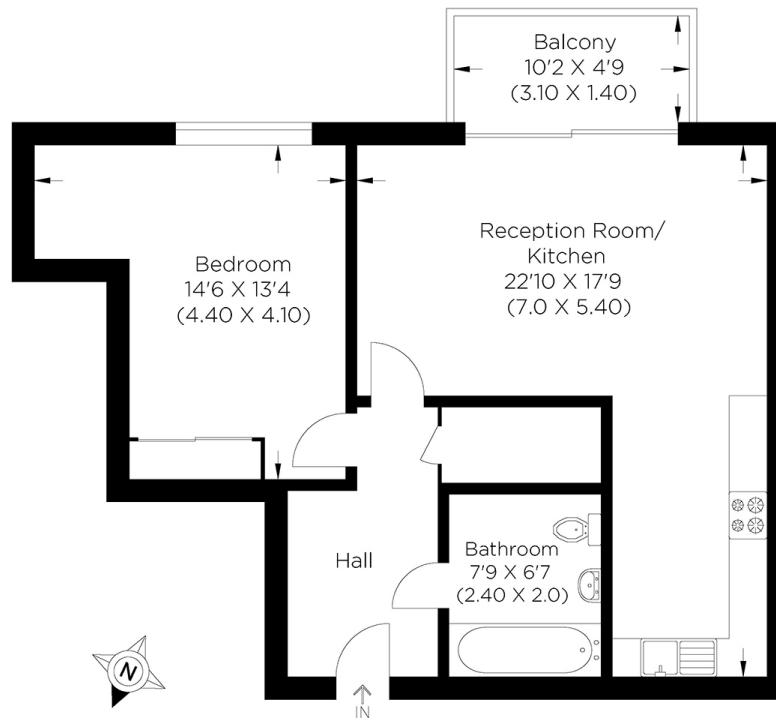




# KERENSKY HOUSE E14

This stunning, immaculately presented one-bedroom apartment is in Kerensky House, Upper North Street, Canary Wharf E14, part of the popular New Festival Quarter development. The property consists of a stylish kitchen/lounge with space for dining, a generous-sized bedroom and a beautiful three-piece bathroom, all in fantastic order and finished to an exacting standard. The superb balcony offers a great setting to unwind for an evening and enjoy al fresco dining. The development has excellent facilities, including concierge services, communal gardens, and a resident's gym. New Festival Quarter is a highly sought-after development, being within effortless reach from Langdon Park and Westferry DLR stations and the Canary Wharf estate being easily accessible. Beautiful and recently renovated Bartlett Park is nearby and provides a scenic backdrop for a stroll at the weekend or an invigorating run.

Borough: Tower Hamlets\* Council Tax: C\* EPC: C Lease Term: 239\* Service Charge: £2,153\* Ground Rent: £315\*



Approximate gross internal area  
54.50 sq m / 587.0 sq ft

**Canary Wharf & Docklands Office**  
2 Westferry Road, Canary Wharf, London E14 8JT

t: 020 7537 9859 e: [canarywharf@alexneil.com](mailto:canarywharf@alexneil.com)

Disclaimer: Property descriptions are subjective and used in good faith as an opinion rather than statements of fact. The owner provided information relating to title, tenure, service charges and ground rent information. Therefore, please make specific enquiries to ensure that our descriptions match your expectations of the property. Floor plan measurements are approximate and for illustrative purposes only. Furthermore, we have not tested any services, systems or appliances at this property. And we strongly recommend that you verify all the provided information on inspection and that your surveyor and conveyancer further confirm details. Also, market conditions and property values regularly fluctuate. And showcased sold properties demonstrate our previous successes rather than indicate live property values. \*As advised by the owner. \*\*Property sold subject to contract.



## ALEX NEIL

ESTATE AGENTS SINCE 1984