



BRUNEL COURT SE16  
**2 bedroom apartment**

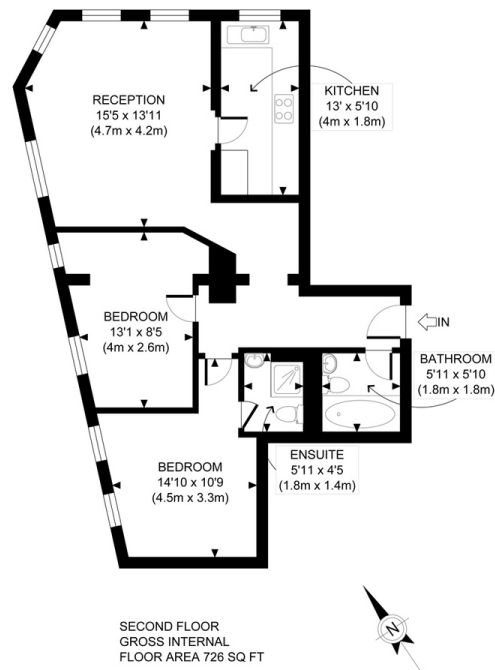
**£560,000**  
SOLD



# BRUNEL COURT SE16

We present a rare-to-the-market apartment within the highly sought-after Brunel Court, Brunel Road, Rotherhithe SE16. The seller has carefully decorated this property, which is currently in excellent condition. The apartment comprises a large and airy lounge, a separate fitted kitchen with integrated appliances, two large bedrooms, an en-suite to the main, a stylish family bathroom, and further benefits from secure entry. Brunel Court is ideal for Rotherhithe Overground and Canada Water Jubilee Line Stations. The scenic green open space of Mayflower Park provides a beautiful setting for a morning run or a stroll at the weekend, and the diverse choice of superb eateries and gastropubs nearby allows for the perfect excuse to meet with friends rather than cook after a long day! We highly recommend booking your appointment to view this apartment.

Borough: Southwark\* Council Tax: D\* EPC: C Lease Term: 98\* Service Charge: £2,500\* Ground Rent: £150\*



APPROX. GROSS INTERNAL FLOOR AREA 726 SQ FT / 67 SQM

**Rotherhithe & Bermondsey Office**  
146 Lower Road, London SE16 2UG

t: 020 7237 6767 e: [rotherhithe@alexneil.com](mailto:rotherhithe@alexneil.com)

Disclaimer: Property descriptions are subjective and used in good faith as an opinion rather than statements of fact. The owner provided information relating to title, tenure, service charges and ground rent information. Therefore, please make specific enquiries to ensure that our descriptions match your expectations of the property. Floor plan measurements are approximate and for illustrative purposes only. Furthermore, we have not tested any services, systems or appliances at this property. And we strongly recommend that you verify all the provided information on inspection and that your surveyor and conveyancer further confirm details. Also, market conditions and property values regularly fluctuate. And showcased sold properties demonstrate our previous successes rather than indicate live property values. \*As advised by the owner. \*\*Property sold subject to contract.



# ALEX NEIL

ESTATE AGENTS SINCE 1984