



FORESHORE SE8
1 bedroom apartment

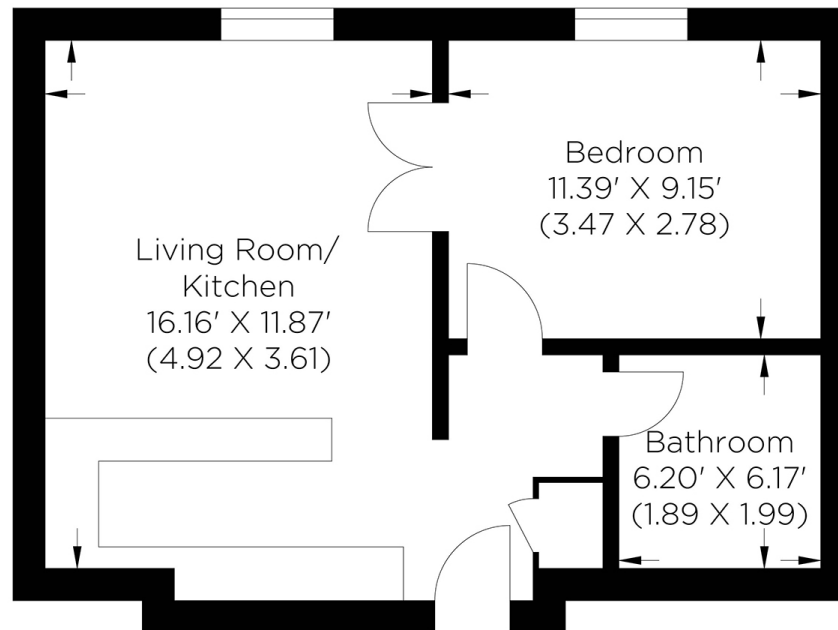
£325,000
SOLD



FORESHORE SE8

We present a large one-bedroom apartment in Foreshore, Deptford SE8, a highly desirable Georgian riverside development. This chain-free property is ideally located on the bank of the Thames and provides excellent transport links. The apartment comprises a large reception room with an open-plan kitchen, a breakfast bar and integrated appliances, a generous main bedroom, and a modern three-piece bathroom. There are high ceilings, sash windows and access to the communal gardens. Foreshore boasts excellent travel connections via the Thames Clipper boat service and Deptford Mainline Station. The glorious green space of Pepys Park affords a scenic backdrop for a morning run or an evening stroll taking in the stunning lights flowing from Canary Wharf. We recommend your earliest viewing.

Borough: Lewisham* Council Tax: B* EPC: E Lease Term: 176 years* Service Charge: £1,946* Ground Rent: £10*
Nearest Station: Deptford (0.73 miles) Material Information: www.alexneil.com/material-information



Approximate gross internal area
36.58 sq m / 393.74 sq ft

Rotherhithe & Bermondsey Office
146 Lower Road, London SE16 2UG

t: 020 7237 6767 e: rotherhithe@alexneil.com

Disclaimer: Property descriptions are subjective and used in good faith as an opinion rather than statements of fact. The owner provided information relating to title, tenure, service charges and ground rent information. Therefore, please make specific enquiries to ensure that our descriptions match your expectations of the property. Floor plan measurements are approximate and for illustrative purposes only. Furthermore, we have not tested any services, systems or appliances at this property. And we strongly recommend that you verify all the provided information on inspection and that your surveyor and conveyancer further confirm details. Also, market conditions and property values regularly fluctuate. And showcased sold properties demonstrate our previous successes rather than indicate live property values. *As advised by the owner. **Property sold subject to contract.



ALEX NEIL

ESTATE AGENTS SINCE 1984

2024 signifies our **40th Anniversary**, and we are immensely proud to have reached this impressive longevity milestone. In celebration, we launched an **exceptional promotion** for sellers, affording them increased marketing exposure for free!

40 years of expertise: With four decades of experience, we bring a wealth of knowledge and expertise. Our durability is a testament to the trust satisfied clients place in us. We understand the nuances of the diverse neighbourhoods we cover. Our local expertise allows us to provide tailored solutions, whether you're buying or selling, allowing you to move with confidence.



ALEX NEIL

ESTATE AGENTS SINCE 1984

www.alexneil.com