



WHEAT SHEAF CLOSE E14  
**2 bedroom apartment**

**£425,000**  
SOLD

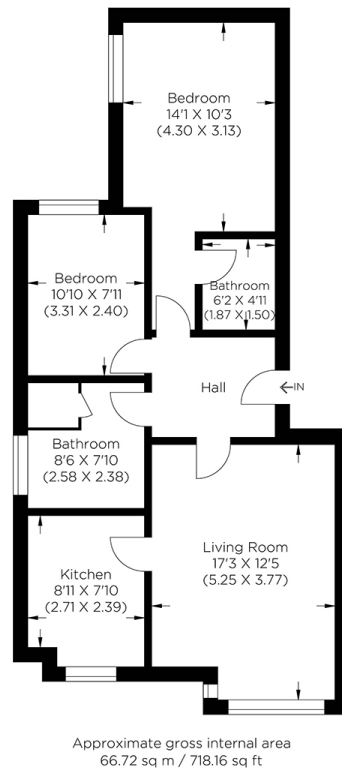




# WHEAT SHEAF CLOSE E14

This well-proportioned two-bedroom, two-bathroom apartment is in the desirable Wheat Sheaf Close, Isle of Dogs, E14. This wonderful home has views over Millwall Dock and boasts comfortable living space. The accommodation comprises a well-proportioned reception room leading to a stylish fitted kitchen, two double bedrooms with an en-suite bathroom to the main bedroom and a family bathroom. The apartment has allocated parking. Wheat Sheaf Close is near Mudchute DLR and is ideal for commuters. There are local shops and a convenient Asda superstore. Mill Quay is a modern development in the heart of the Isle of Dogs, close to Canary Wharf's plazas. We recommend you organise a viewing appointment.

Borough: Tower Hamlets\* Council Tax: E\* EPC: C Lease Term: 154 years\* Service Charge: £2,160\* Ground Rent: £250\*  
Nearest Station: Mudchute (0.21 miles) Material Information: [www.alexneil.com/material-information](http://www.alexneil.com/material-information)



**Canary Wharf & Docklands Office**  
**2 Westferry Road, Canary Wharf, London E14 8JT**

t: 020 7537 9859 e: [canarywharf@alexneil.com](mailto:canarywharf@alexneil.com)

Disclaimer: Property descriptions are subjective and used in good faith as an opinion rather than statements of fact. The owner provided information relating to title, tenure, service charges and ground rent information. Therefore, please make specific enquiries to ensure that our descriptions match your expectations of the property. Floor plan measurements are approximate and for illustrative purposes only. Furthermore, we have not tested any services, systems or appliances at this property. And we strongly recommend that you verify all the provided information on inspection and that your surveyor and conveyancer further confirm details. Also, market conditions and property values regularly fluctuate. And showcased sold properties demonstrate our previous successes rather than indicate live property values. \*As advised by the owner. \*\*Property sold subject to contract.



# ALEX NEIL

ESTATE AGENTS SINCE 1984