



ELM COURT SE16
2 bedroom duplex apartment

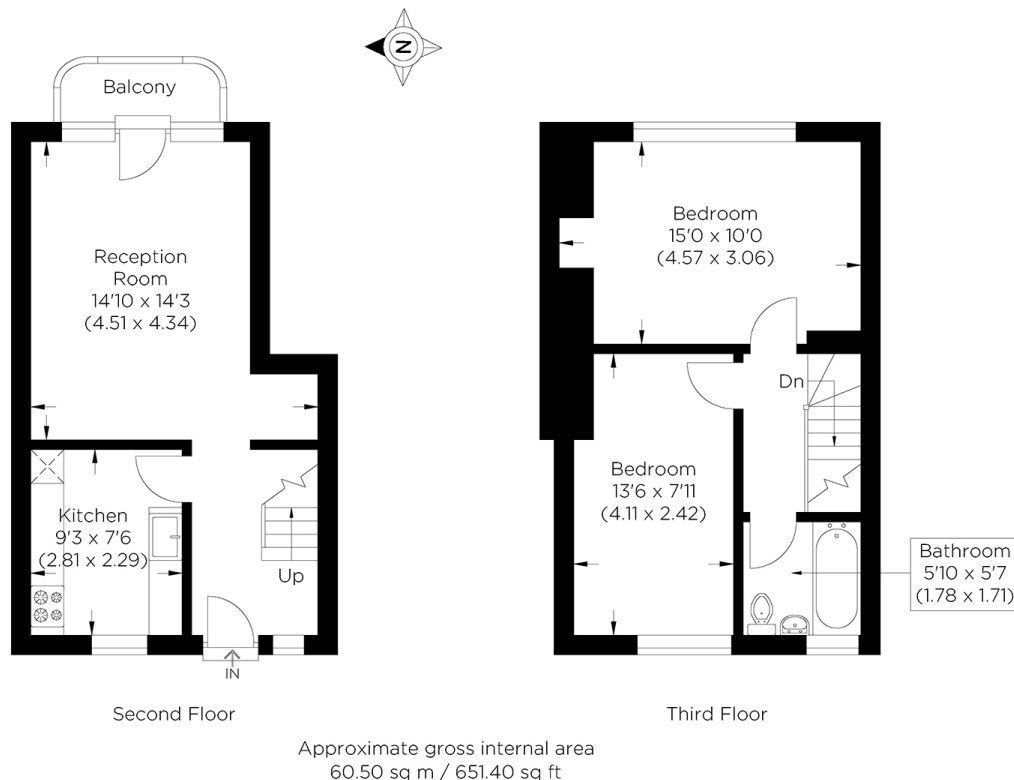
£400,000
SOLD



ELM COURT SE16

Set on the top floor of this gated development, Elm Court, Acorn Walk, Rotherhithe SE16, is this spacious two double bedroom duplex apartment. Offered in wonderful condition throughout, this property comprises of a spacious reception room offering access to a private balcony, a fully fitted kitchen with integrated appliances, two double bedrooms with ample storage space and a newly fitted three-piece family bathroom. Additionally featuring gas central heating, double glazing, ample storage for storage and secure parking. Acorn Walk is perfectly placed for the Doubletree Docklands Pier and is well served by a regular bus route. Pearson's Park provides a scenic back drop for a picnic with friends and a leisurely stroll takes you on a riverside walk with a choice of places to stop for some refreshment. This property is sure to attract much interest, your earliest internal inspection is advised.

Borough: Southwark* Council Tax: C* EPC: E Lease Term: 89* Service Charge: £1,398* Ground Rent: TBA



Rotherhithe & Bermondsey Office
146 Lower Road, London SE16 2UG

t: 020 7237 6767 e: rotherhithe@alexneil.com

Disclaimer: Property descriptions are subjective and used in good faith as an opinion rather than statements of fact. The owner provided information relating to title, tenure, service charges and ground rent information. Therefore, please make specific enquiries to ensure that our descriptions match your expectations of the property. Floor plan measurements are approximate and for illustrative purposes only. Furthermore, we have not tested any services, systems or appliances at this property. And we strongly recommend that you verify all the provided information on inspection and that your surveyor and conveyancer further confirm details. Also, market conditions and property values regularly fluctuate. And showcased sold properties demonstrate our previous successes rather than indicate live property values. *As advised by the owner. **Property sold subject to contract.

ALEX NEIL

ESTATE AGENTS SINCE 1984