



PENNINGTON WAY SE12
2 bedroom terraced house

£380,000
SOLD

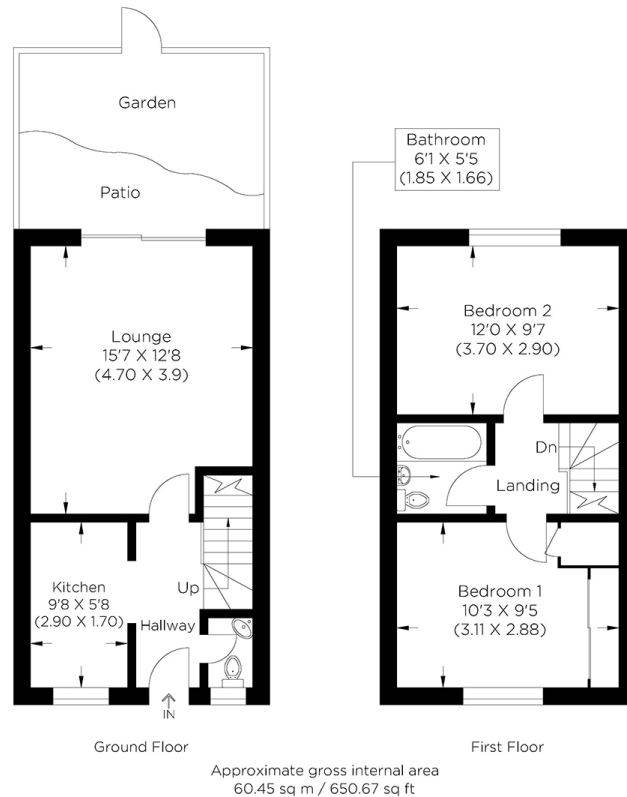


PENNINGTON WAY SE12

Rare to the market is this beautifully presented terraced house, ideally positioned within this residential cul-de-sac, Pennington Way, Grove Park SE12. The accommodation is spacious and comfortable while enjoying a modern and contemporary feel. The accommodation comprises a large lounge opening to a well-kept garden, a separate fitted kitchen, two double bedrooms, a stylish bathroom and a downstairs cloakroom. Furthermore, the property benefits from double-glazed windows and has gas central heating, two allocated parking spaces and a substantial loft space. Pennington Way boasts a fantastic location with excellent transport links, local amenities and scenic open areas.

Borough: Lewisham* Council Tax: D* EPC: C

Nearest Station: Grove Park (0.4 miles) Material Information: www.alexneil.com/material-information



Rotherhithe & Bermondsey Office
146 Lower Road, London SE16 2UG

t: 020 7237 6767 e: rotherhithe@alexneil.com

Disclaimer: Property descriptions are subjective and used in good faith as an opinion rather than statements of fact. The owner provided information relating to title, tenure, service charges and ground rent information. Therefore, please make specific enquiries to ensure that our descriptions match your expectations of the property. Floor plan measurements are approximate and for illustrative purposes only. Furthermore, we have not tested any services, systems or appliances at this property. And we strongly recommend that you verify all the provided information on inspection and that your surveyor and conveyancer further confirm details. Also, market conditions and property values regularly fluctuate. And showcased sold properties demonstrate our previous successes rather than indicate live property values. *As advised by the owner. **Property sold subject to contract.



ALEX NEIL

ESTATE AGENTS SINCE 1984