



FOLLETT STREET E14
2 bedroom apartment

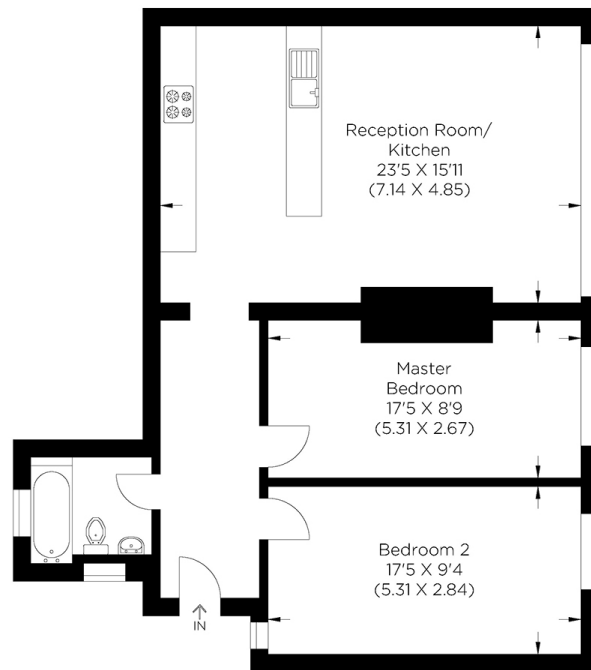
£375,000
SOLD



FOLLETT STREET E14

We present a stunning period conversion in Follett Street, Poplar E14. The apartment is in a private gated development with a private street entrance. Internally, the high ceilings accentuate the feeling of space. The property comprises a spacious open-plan kitchen and reception room, two generous double bedrooms, a recently refurbished bathroom and ample storage space. There is a parking space for added convenience. We highly recommend arranging your appointment to view this apartment.

Borough: Tower Hamlets* Council Tax: C* EPC: D Lease Term: 90* Service Charge: £1,587* Ground Rent: £200*



Ground Floor

Approximate gross internal area
77.60 sq m / 835.0 sq ft



Canary Wharf & Docklands Office
2 Westferry Road, Canary Wharf, London E14 8JT

t: 020 7537 9859 e: canarywharf@alexneil.com

Disclaimer: Property descriptions are subjective and used in good faith as an opinion rather than statements of fact. The owner provided information relating to title, tenure, service charges and ground rent information. Therefore, please make specific enquiries to ensure that our descriptions match your expectations of the property. Floor plan measurements are approximate and for illustrative purposes only. Furthermore, we have not tested any services, systems or appliances at this property. And we strongly recommend that you verify all the provided information on inspection and that your surveyor and conveyancer further confirm details. Also, market conditions and property values regularly fluctuate. And showcased sold properties demonstrate our previous successes rather than indicate live property values. *As advised by the owner. **Property sold subject to contract.

ALEX NEIL

ESTATE AGENTS SINCE 1984