



ARNHEM WHARF E14
2 bedroom apartment

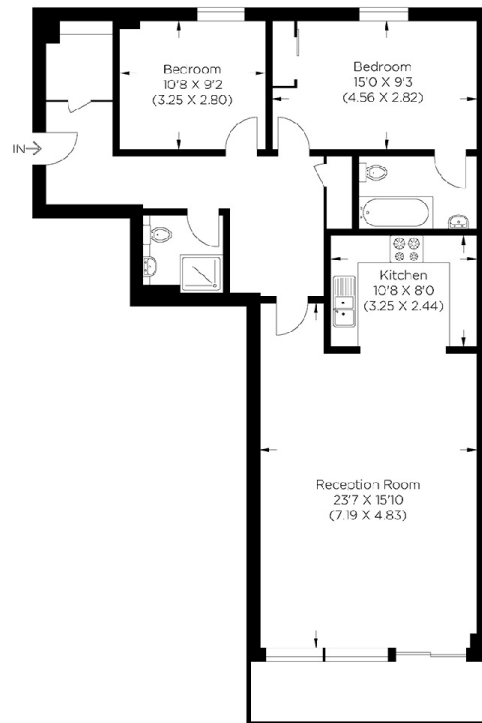
£610,000
SOLD



ARNHEM WHARF E14

We present a beautifully presented two double-bedroom apartment in the popular gated development Arnhem Wharf, Arnhem Place, Isle of Dogs E14. The accommodation comprises a spacious lounge with access to an extensive private balcony offering unparalleled views of the River Thames, a stylish kitchen with integrated appliances, two large bedrooms, en-suite to the master and a modern three-piece family bathroom. Benefits include an attentive concierge service, ample storage and secure and gated parking. Situated within proximity to the vibrant area of Canary Wharf, local transport links include Canary Wharf Jubilee and South Quay DLR. The scenic Thames Path provides a wonderful setting for an early evening walk, perhaps stopping for refreshment. There is no chain, and we highly recommend organising your viewing appointment.

Borough: Tower Hamlets* Council Tax: F* EPC: C Lease Term: 975 years* Service Charge: £5,579* Ground Rent: TBA
Nearest Station: Crossharbour (0.57 miles) Material Information: www.alexneil.com/material-information



Approximate gross internal area
86.30 sq m / 929.0 sq ft

Canary Wharf & Docklands Office
2 Westferry Road, Canary Wharf, London E14 8JT

t: 020 7537 9859 e: canarywharf@alexneil.com

Disclaimer: Property descriptions are subjective and used in good faith as an opinion rather than statements of fact. The owner provided information relating to title, tenure, service charges and ground rent information. Therefore, please make specific enquiries to ensure that our descriptions match your expectations of the property. Floor plan measurements are approximate and for illustrative purposes only. Furthermore, we have not tested any services, systems or appliances at this property. And we strongly recommend that you verify all the provided information on inspection and that your surveyor and conveyancer further confirm details. Also, market conditions and property values regularly fluctuate. And showcased sold properties demonstrate our previous successes rather than indicate live property values. *As advised by the owner. **Property sold subject to contract.



ALEX NEIL

ESTATE AGENTS SINCE 1984

2024 signifies our **40th Anniversary**, and we are immensely proud to have reached this impressive longevity milestone. In celebration, we launched an **exceptional promotion** for sellers, affording them increased marketing exposure for free!

40 years of expertise: With four decades of experience, we bring a wealth of knowledge and expertise. Our durability is a testament to the trust satisfied clients place in us. We understand the nuances of the diverse neighbourhoods we cover. Our local expertise allows us to provide tailored solutions, whether you're buying or selling, allowing you to move with confidence.



ALEX NEIL

ESTATE AGENTS SINCE 1984

www.alexneil.com