



GARLAND COURT E14
1 bedroom apartment

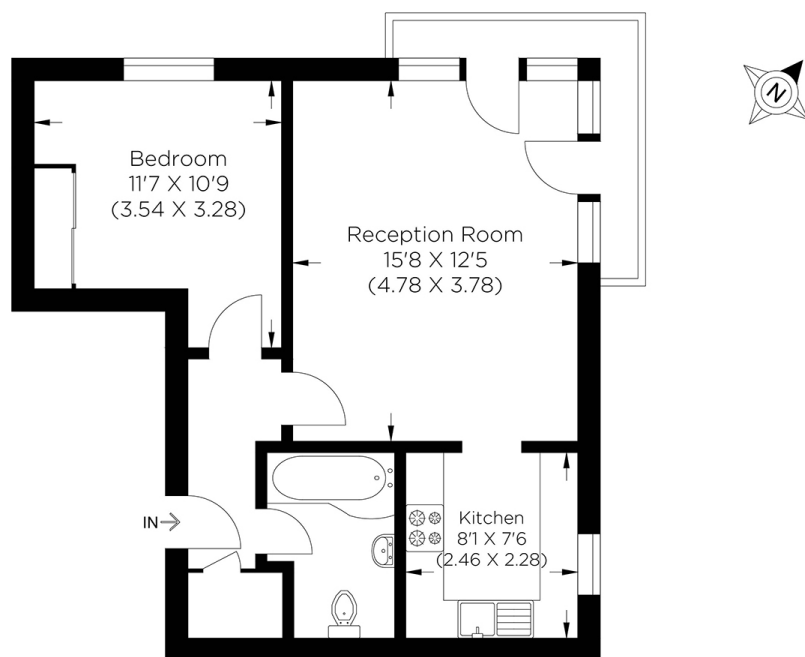
£315,000
SOLD



GARLAND COURT E14

Set on the second floor of the ever-popular Garland Court, part of the Premiere Place development, Canary Wharf E14 is perfect for Westferry DLR station access. This chain-free apartment is in beautiful condition. It comprises an airy living room with floor-to-ceiling windows affording abundant natural light and Juliet balconies, a semi-open plan kitchen with integrated appliances, a large bedroom and a modern three-piece bathroom. Garland Court boasts easy access to Canary Wharf Underground and The Thames Clipper, which offers an easy commute to the City, London City Airport and beyond. Furthermore, the local amenities include bars, restaurants, and parks at Canary Wharf. The fantastic location and the stylish accommodation on offer make an ideal purchase. We recommend your earliest viewing.

Borough: Tower Hamlets* Council Tax: C* EPC: B Lease Term: 900 years* Service Charge: £1,800* Ground Rent: TBA
Nearest Station: Westferry (0.07 miles) Material Information: www.alexneil.com/material-information



Second Floor
Approximate gross internal area
43.5 sq m / 468.0 sq ft

Canary Wharf & Docklands Office
2 Westferry Road, Canary Wharf, London E14 8JT

t: 020 7537 9859 e: canarywharf@alexneil.com

Disclaimer: Property descriptions are subjective and used in good faith as an opinion rather than statements of fact. The owner provided information relating to title, tenure, service charges and ground rent information. Therefore, please make specific enquiries to ensure that our descriptions match your expectations of the property. Floor plan measurements are approximate and for illustrative purposes only. Furthermore, we have not tested any services, systems or appliances at this property. And we strongly recommend that you verify all the provided information on inspection and that your surveyor and conveyancer further confirm details. Also, market conditions and property values regularly fluctuate. And showcased sold properties demonstrate our previous successes rather than indicate live property values. *As advised by the owner. **Property sold subject to contract.



ALEX NEIL

ESTATE AGENTS SINCE 1984

2024 signifies our **40th Anniversary**, and we are immensely proud to have reached this impressive longevity milestone. In celebration, we launched an **exceptional promotion** for sellers, affording them increased marketing exposure for free!

40 years of expertise: With four decades of experience, we bring a wealth of knowledge and expertise. Our durability is a testament to the trust satisfied clients place in us. We understand the nuances of the diverse neighbourhoods we cover. Our local expertise allows us to provide tailored solutions, whether you're buying or selling, allowing you to move with confidence.



ALEX NEIL

ESTATE AGENTS SINCE 1984

www.alexneil.com