



LEEWARD COURT E1W  
**2 bedroom apartment**

**£450,000**  
SOLD

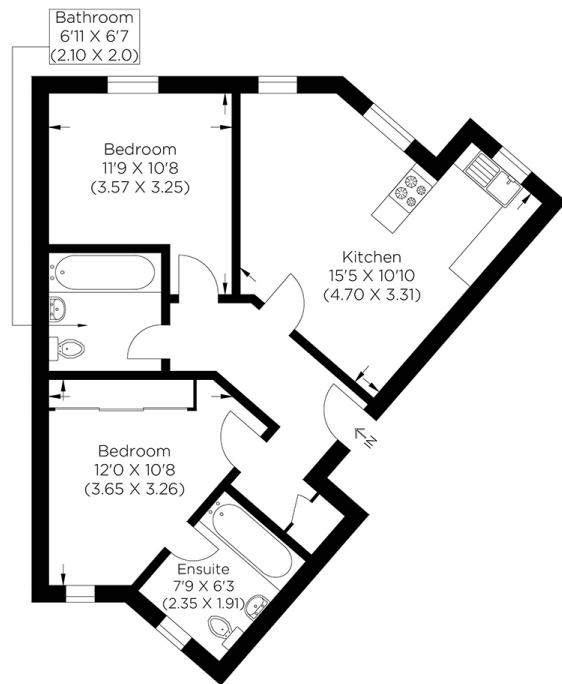




# LEEWARD COURT E1W

We offer a well-proportioned two-bedroom apartment in the highly esteemed Leeward Court, Kennet Street, Wapping E1W. Leeward Court is near the Ornamental Canal. This bright, airy apartment comprises an open-plan living space, two double bedrooms, a family bathroom, and an en-suite. The property has the scope to make this your perfect home, whatever your style is. Leeward Court is in the popular West Wapping development, Quay 430. There are concierge services, and Leeward Court is within easy reach of the wide variety of shops, bars and restaurants in St Katharine Docks and Thomas More Square, including a Waitrose superstore. Tower Hill (underground) and Wapping (overground) stations are nearby and provide regular transport links across London, allowing straightforward access to The City and Canary Wharf. This spacious apartment benefits from being chain-free!

Borough: Tower Hamlets\* Council Tax: E\* EPC: C Lease Term: 999 years\* Service Charge: £2,300\* Ground Rent: £20\*  
Nearest Station: Wapping (0.36 miles) Material Information: [www.alexneil.com/material-information](http://www.alexneil.com/material-information)



Second Floor  
Approximate gross internal area  
64.73 sq m / 696.74 sq ft

**Canary Wharf & Docklands Office**  
2 Westferry Road, Canary Wharf, London E14 8JT

t: 020 7537 9859 e: [canarywharf@alexneil.com](mailto:canarywharf@alexneil.com)

Disclaimer: Property descriptions are subjective and used in good faith as an opinion rather than statements of fact. The owner provided information relating to title, tenure, service charges and ground rent information. Therefore, please make specific enquiries to ensure that our descriptions match your expectations of the property. Floor plan measurements are approximate and for illustrative purposes only. Furthermore, we have not tested any services, systems or appliances at this property. And we strongly recommend that you verify all the provided information on inspection and that your surveyor and conveyancer further confirm details. Also, market conditions and property values regularly fluctuate. And showcased sold properties demonstrate our previous successes rather than indicate live property values. \*As advised by the owner. \*\*Property sold subject to contract.



## ALEX NEIL

ESTATE AGENTS SINCE 1984

2024 signifies our **40th Anniversary**, and we are immensely proud to have reached this impressive longevity milestone. In celebration, we launched an **exceptional promotion** for sellers, affording them increased marketing exposure for free!

**40 years of expertise:** With four decades of experience, we bring a wealth of knowledge and expertise. Our durability is a testament to the trust satisfied clients place in us. We understand the nuances of the diverse neighbourhoods we cover. Our local expertise allows us to provide tailored solutions, whether you're buying or selling, allowing you to move with confidence.



ALEX NEIL

ESTATE AGENTS SINCE 1984

[www.alexneil.com](http://www.alexneil.com)