



MANTHORPE ROAD SE18  
**2 bedroom duplex apartment**

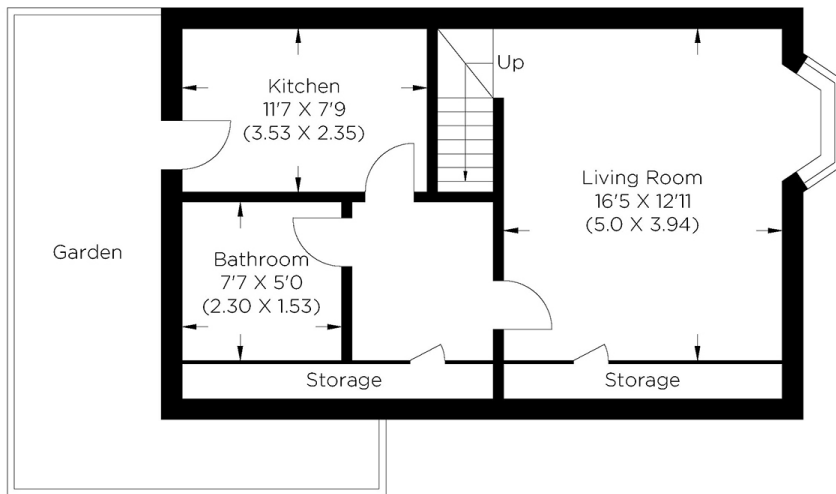
**£265,000**  
SOLD



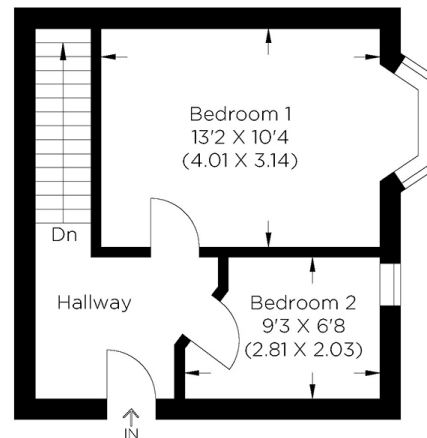
# MANTHORPE ROAD SE18

A rare to the market, well presented two bedroom duplex apartment in the convenient Manthorpe Road, Woolwich SE18. Set in this enviably located detached Victorian Townhouse, this vast property comprises of a large reception with high ceilings and large windows, a separate dining room, a large kitchen/diner with direct access to a well maintained shared garden, one large double bedroom, one single bedroom and a three piece bathroom suite. This property further benefits from ample storage space and gas central heating. With easy access to Woolwich Arsenal Station, this superb property is located perfectly for commuters. This one of a kind property would suit a first time buyer looking to put theirs stamp on a property or a buy to let investor. Offered with a long lease and no onward chain, your earliest internal inspection is recommended.

Borough: Royal Greenwich\* Council Tax: B\* EPC: D Lease Term: 149 years\* Service Charge: TBA Ground Rent: TBA  
Nearest Station: Plumstead (0.4 miles) Material Information: [www.alexneil.com/material-information](http://www.alexneil.com/material-information)



Lower Ground Floor



Ground Floor

Approximate gross internal area  
70.23 sq m / 755.94 sq ft



**Chislehurst & Bromley Office**  
61 High Street, Chislehurst BR7 5AF

t: 020 8297 8800 e: [chislehurst@alexneil.com](mailto:chislehurst@alexneil.com)

Disclaimer: Property descriptions are subjective and used in good faith as an opinion rather than statements of fact. The owner provided information relating to title, tenure, service charges and ground rent information. Therefore, please make specific enquiries to ensure that our descriptions match your expectations of the property. Floor plan measurements are approximate and for illustrative purposes only. Furthermore, we have not tested any services, systems or appliances at this property. And we strongly recommend that you verify all the provided information on inspection and that your surveyor and conveyancer further confirm details. Also, market conditions and property values regularly fluctuate. And showcased sold properties demonstrate our previous successes rather than indicate live property values. \*As advised by the owner. \*\*Property sold subject to contract.

## ALEX NEIL

ESTATE AGENTS SINCE 1984

2024 signifies our **40th Anniversary**, and we are immensely proud to have reached this impressive longevity milestone. In celebration, we launched an **exceptional promotion** for sellers, affording them increased marketing exposure for free!

**40 years of expertise:** With four decades of experience, we bring a wealth of knowledge and expertise. Our durability is a testament to the trust satisfied clients place in us. We understand the nuances of the diverse neighbourhoods we cover. Our local expertise allows us to provide tailored solutions, whether you're buying or selling, allowing you to move with confidence.



ALEX NEIL

ESTATE AGENTS SINCE 1984

[www.alexneil.com](http://www.alexneil.com)