



THORPE COURT E3
1 bedroom apartment

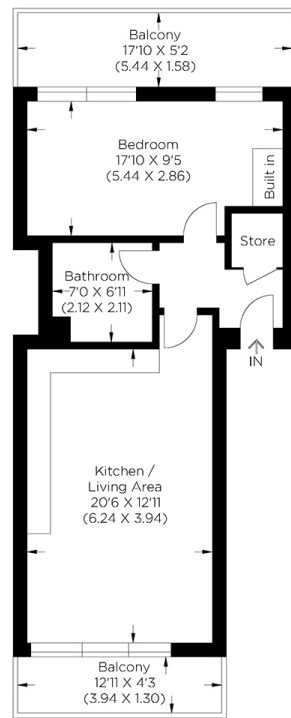
£400,000
SOLD



THORPE COURT E3

Set within Thorpe Court, Bramble Path, Bow E3, forming part of the highly desired Bow River Village development, this stunning one-bedroom apartment benefits from abundant light and a feeling of space. Beautifully presented throughout, this spacious apartment comprises a sizeable open plan living/kitchen diner leading to a private balcony, plus a tastefully decorated bathroom, and the bedroom leads to a second larger-than-average balcony which looks over the River Lea. The apartment also benefits from a secure underground parking space and is EWS1 Compliant. Thorpe Court is located on the River Lea in Bromley-by-Bow and has excellent transport links into Canary Wharf, Bank and Central London. Bromley-by-Bow underground station is near the property, whilst Bow Church and Pudding Mill Lane DLR Stations are just under a mile away.

Borough: Tower Hamlets* Council Tax: C* EPC: B Lease Term: 248* Service Charge: £1,877* Ground Rent: £250*



Approximate gross internal area
51.72 sq m / 556.7 sq ft

Canary Wharf & Docklands Office
2 Westferry Road, Canary Wharf, London E14 8JT

t: 020 7537 9859 e: canarywharf@alexneil.com

Disclaimer: Property descriptions are subjective and used in good faith as an opinion rather than statements of fact. The owner provided information relating to title, tenure, service charges and ground rent information. Therefore, please make specific enquiries to ensure that our descriptions match your expectations of the property. Floor plan measurements are approximate and for illustrative purposes only. Furthermore, we have not tested any services, systems or appliances at this property. And we strongly recommend that you verify all the provided information on inspection and that your surveyor and conveyancer further confirm details. Also, market conditions and property values regularly fluctuate. And showcased sold properties demonstrate our previous successes rather than indicate live property values. *As advised by the owner. **Property sold subject to contract.



ALEX NEIL

ESTATE AGENTS SINCE 1984