



WHARFSIDE POINT SOUTH E14
1 bedroom apartment

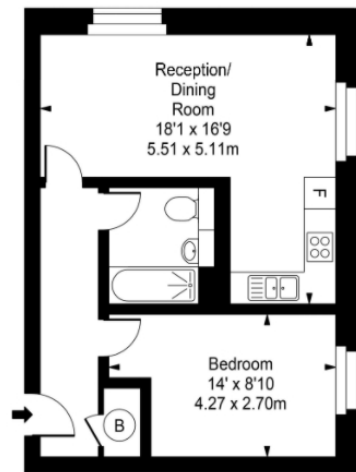
£310,000
SOLD



WHARFSIDE POINT SOUTH E14

We present an immaculate one-bedroom apartment in the highly sought-after Wharfside Point South, Prestons Road, Poplar E14. This covetable building is adjacent to Aspen Way and Docklands Light Railway. It is approximately a minute from Blackwall DLR Station, with excellent proximity to the financial district, Canary Wharf and the wealth of trendy shops, bars and restaurants that it encompasses. The property is set on the thirteenth floor and internally comprises a spacious open-plan lounge with a high-end integrated kitchen, a master bedroom and a stylish three-piece bathroom. Further benefiting from plenty of storage space, a concierge service and a communal roof terrace. Offered with no onward chain and sure to attract much interest, we recommend your earliest inspection.

Borough: Tower Hamlets* Council Tax: C* EPC: TBA Lease Term: 985 years* Service Charge: £2,965* Ground Rent: £125*
Nearest Station: Blackwall (0.09 miles) Material Information: www.alexneil.com/material-information



482 Sq Ft - 44.78 Sq M

Canary Wharf & Docklands Office
2 Westferry Road, Canary Wharf, London E14 8JT

t: 020 7537 9859 e: canarywharf@alexneil.com

Disclaimer: Property descriptions are subjective and used in good faith as an opinion rather than statements of fact. The owner provided information relating to title, tenure, service charges and ground rent information. Therefore, please make specific enquiries to ensure that our descriptions match your expectations of the property. Floor plan measurements are approximate and for illustrative purposes only. Furthermore, we have not tested any services, systems or appliances at this property. And we strongly recommend that you verify all the provided information on inspection and that your surveyor and conveyancer further confirm details. Also, market conditions and property values regularly fluctuate. And showcased sold properties demonstrate our previous successes rather than indicate live property values. *As advised by the owner. **Property sold subject to contract.



ALEX NEIL

ESTATE AGENTS SINCE 1984

2024 signifies our **40th Anniversary**, and we are immensely proud to have reached this impressive longevity milestone. In celebration, we launched an **exceptional promotion** for sellers, affording them increased marketing exposure for free!

40 years of expertise: With four decades of experience, we bring a wealth of knowledge and expertise. Our durability is a testament to the trust satisfied clients place in us. We understand the nuances of the diverse neighbourhoods we cover. Our local expertise allows us to provide tailored solutions, whether you're buying or selling, allowing you to move with confidence.



ALEX NEIL

ESTATE AGENTS SINCE 1984

www.alexneil.com